

THE MAPLE

1,612 sq.ft. – Elevation A | 1,632 sq.ft. – Elevation B



TRAILS OF WHITEVALE

WHERE MARKHAM MEETS PICKERING



Front Elevation

ARTIST'S CONCEPT



Rear Elevation

ARTIST'S CONCEPT

**Sundial
HOMES**

Floor plans, elevations, dimensions and details may be revised at Vendor's sole discretion. All dimensions are approximate and may vary, and generally comprise the greater length by the greater width of the area. Note that actual usable floor area may vary from that stated, which includes open areas and finished below grade areas where applicable. Homes may be sited in reverse and Purchaser agrees to same. Steps, porch, deck and railings may vary at any exterior entrance including garage entrance. Boxing is not shown. Illustrations are artist's concept. The Agreement of Purchase and Sale prevails in the event of conflict or ambiguity. LT-172 E. & O.E.

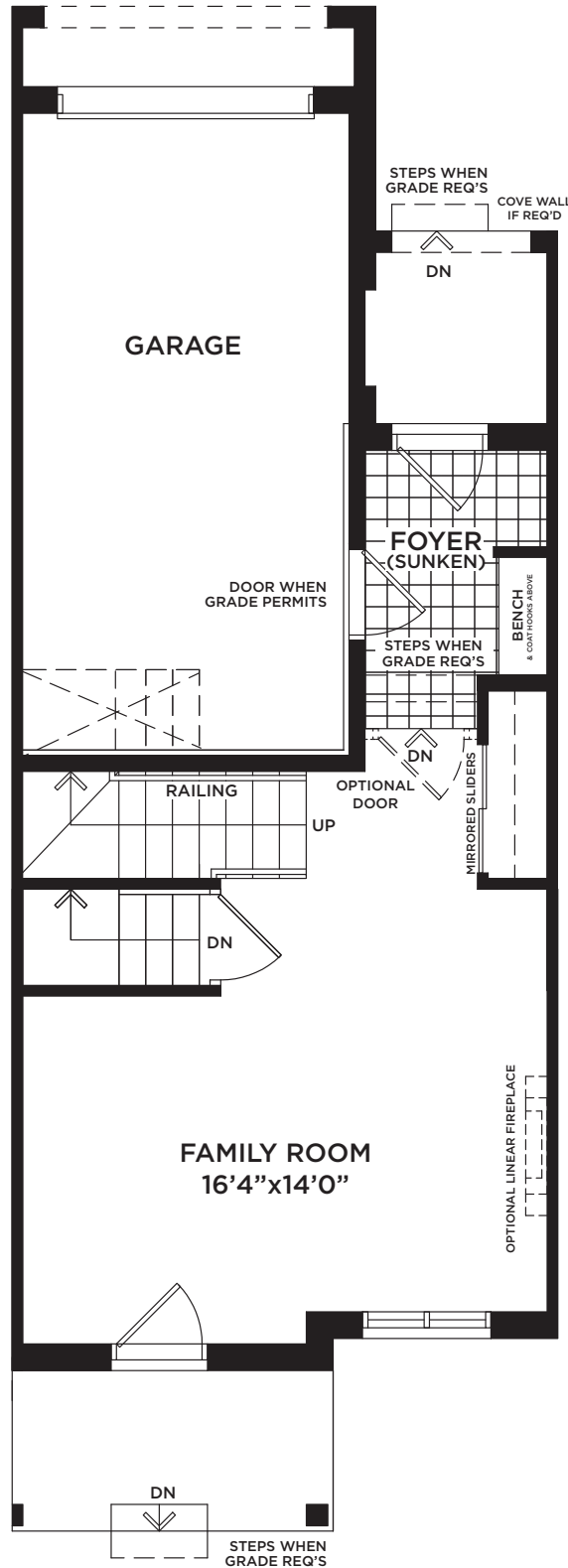
THE MAPLE

1,612 sq.ft. – Elevation A | 1,632 sq.ft. – Elevation B



TRAILS OF WHITEVALE

WHERE MARKHAM MEETS PICKERING



GROUND FLOOR
ELEVATION 'A'



Floor plans, elevations, dimensions and details may be revised at Vendor's sole discretion. All dimensions are approximate and may vary, and generally comprise the greater length by the greater width of the area. Note that actual usable floor area may vary from that stated, which includes open areas and finished below grade areas where applicable. Homes may be sited in reverse and Purchaser agrees to same. Steps, porch, deck and railings may vary at any exterior entrance including garage entrance. Boxing is not shown. Illustrations are artist's concept. The Agreement of Purchase and Sale prevails in the event of conflict or ambiguity. LT-172 E. & O.E.

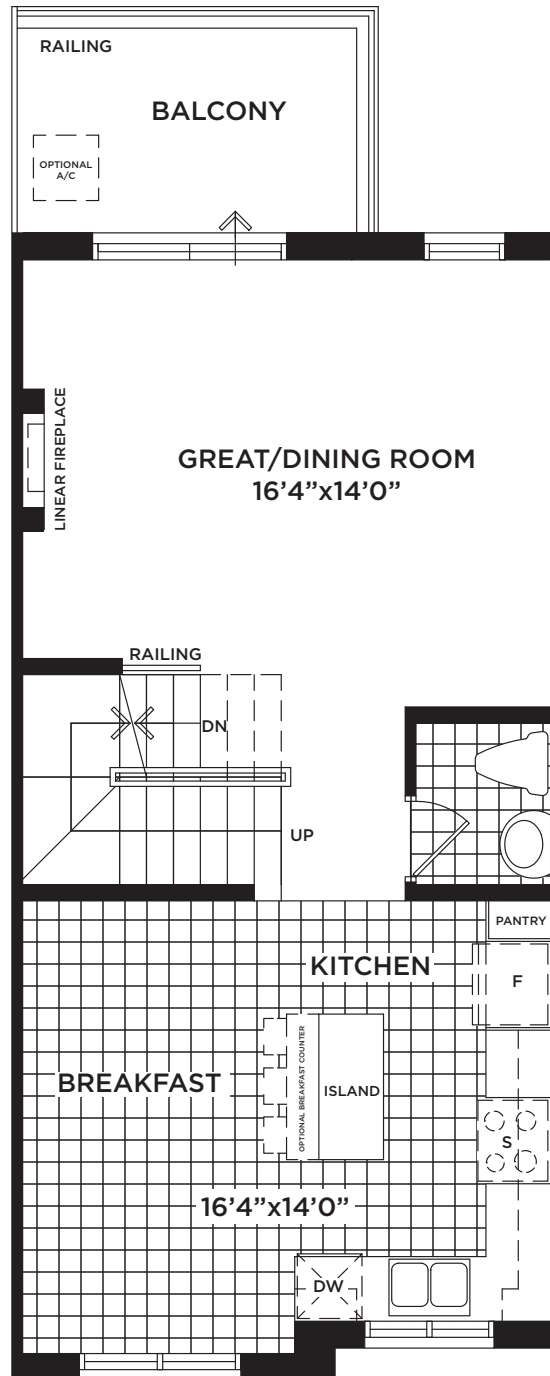
THE MAPLE

1,612 sq.ft. – Elevation A | 1,632 sq.ft. – Elevation B



TRAILS OF WHITEVALE

WHERE MARKHAM MEETS PICKERING



**MAIN FLOOR
ELEVATION 'A'**



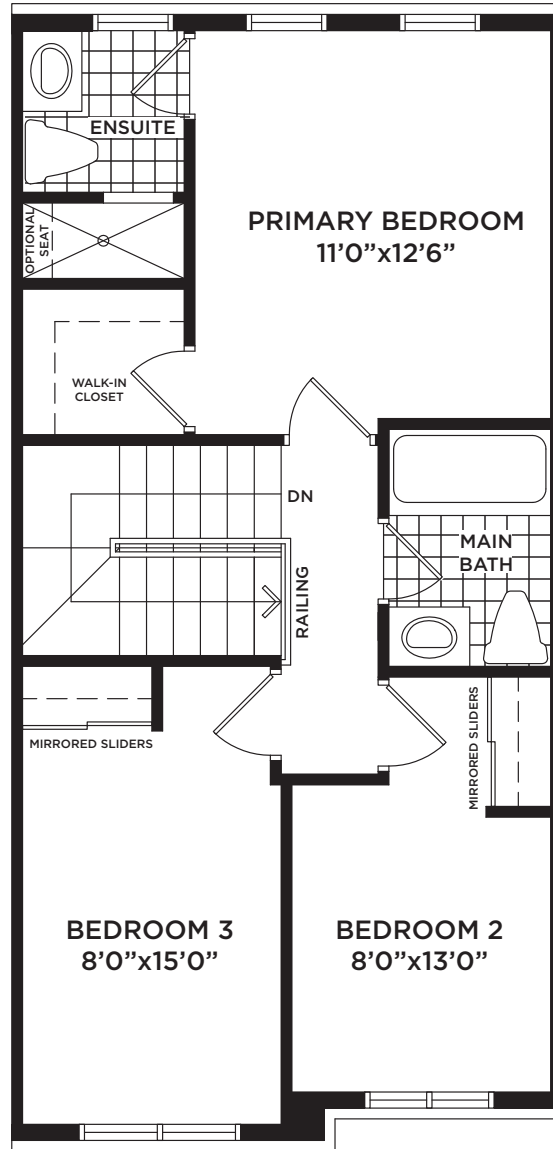
THE MAPLE

1,612 sq.ft. – Elevation A | 1,632 sq.ft. – Elevation B



TRAILS OF WHITEVALE

WHERE MARKHAM MEETS PICKERING



**UPPER FLOOR
ELEVATION 'A'**

**Sundial
HOMES**

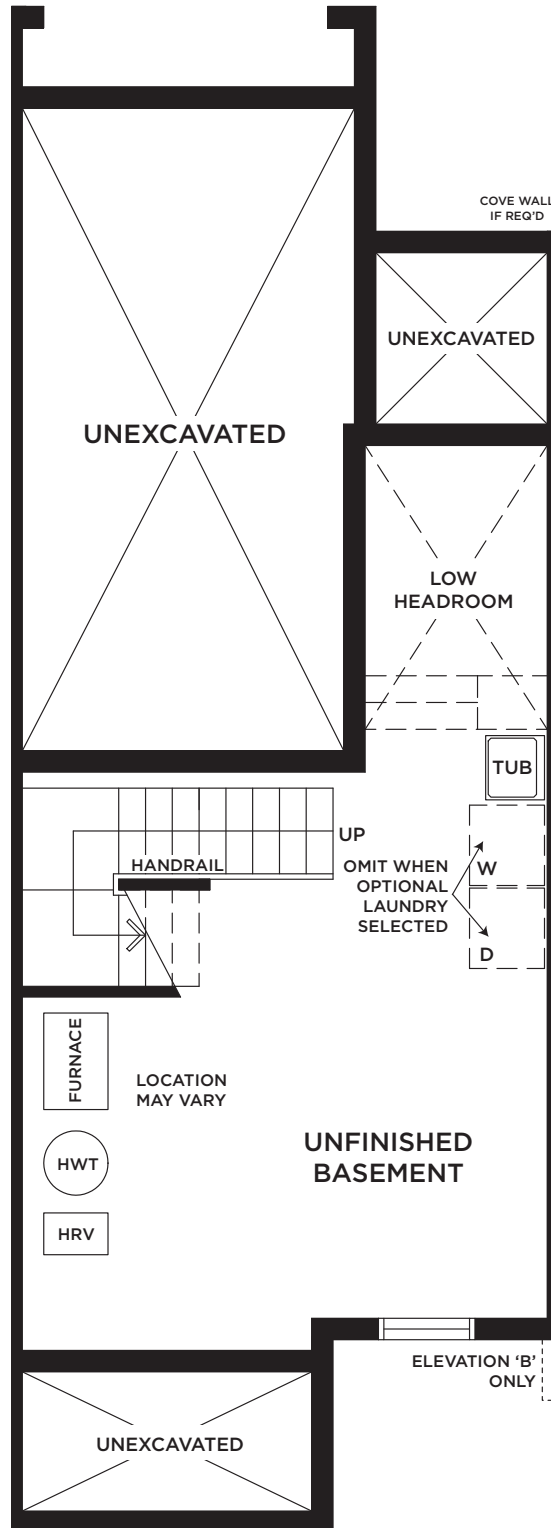
THE MAPLE

1,612 sq.ft. – Elevation A | 1,632 sq.ft. – Elevation B



TRAILS OF WHITEVALE

WHERE MARKHAM MEETS PICKERING



**BASEMENT
ELEVATIONS 'A' & 'B'**



Floor plans, elevations, dimensions and details may be revised at Vendor's sole discretion. All dimensions are approximate and may vary, and generally comprise the greater length by the greater width of the area. Note that actual usable floor area may vary from that stated, which includes open areas and finished below grade areas where applicable. Homes may be sited in reverse and Purchaser agrees to same. Steps, porch, deck and railings may vary at any exterior entrance including garage entrance. Boxing is not shown. Illustrations are artist's concept. The Agreement of Purchase and Sale prevails in the event of conflict or ambiguity. LT-172 E. & O.E.

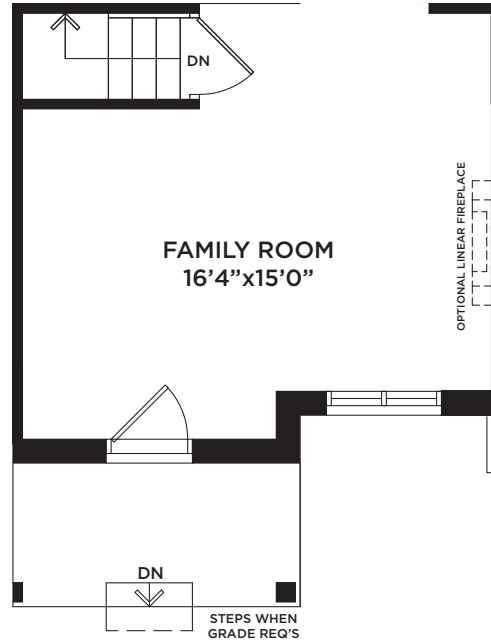
THE MAPLE

1,612 sq.ft. – Elevation A | 1,632 sq.ft. – Elevation B

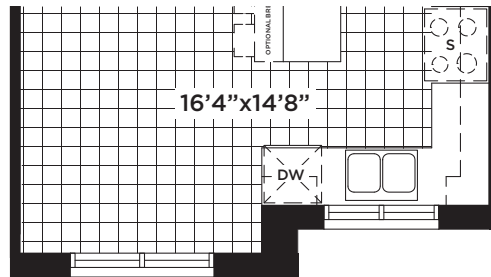


TRAILS OF WHITEVALE

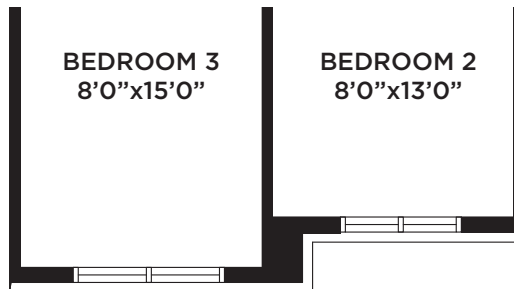
WHERE MARKHAM MEETS PICKERING



**PARTIAL GROUND FLOOR
ELEVATION 'B'**



**PARTIAL MAIN FLOOR
ELEVATION 'B'**



**PARTIAL UPPER FLOOR
ELEVATION 'B'**

**Sundial
HOMES**

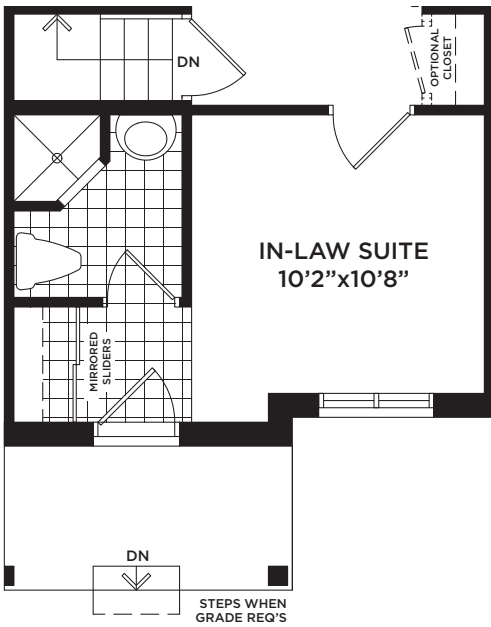
THE MAPLE

1,612 sq.ft. – Elevation A | 1,632 sq.ft. – Elevation B

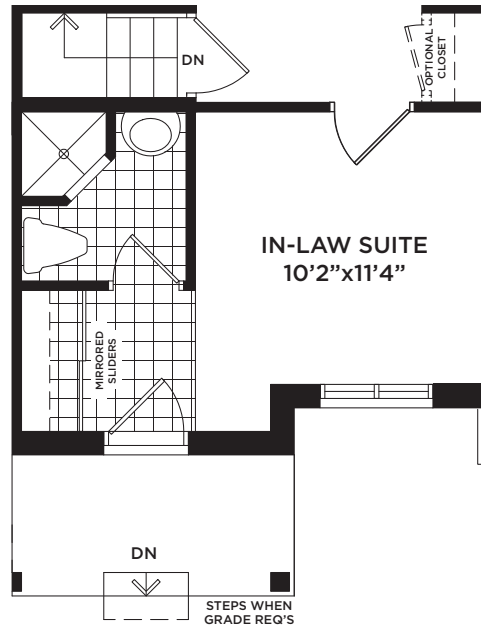


TRAILS OF
WHITEVALE

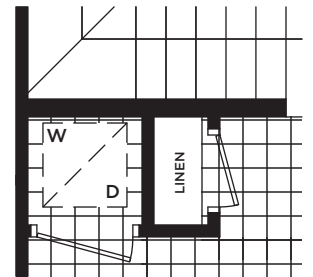
WHERE MARKHAM MEETS PICKERING



**PARTIAL GROUND FLOOR
OPTIONAL IN-LAW SUITE
ELEVATION 'A'**



**PARTIAL GROUND FLOOR
OPTIONAL IN-LAW SUITE
ELEVATION 'B'**



**PARTIAL MAIN FLOOR
OPTIONAL LAUNDRY LAYOUT
ELEVATIONS 'A' & 'B'**

