

# THE KINGFISHER

2,341 sq.ft. – Elevation A | 2,355 sq.ft. – Elevation B  
(INCLUDES 67 SQ. FT. FINISHED BASEMENT)



TRAILS OF  
**WHITEVALE**

WHERE MARKHAM MEETS PICKERING



ELEVATION A



ELEVATION B

**Sundial**  
**HOMES**

Floor plans, elevations, dimensions and details may be revised at Vendor's sole discretion. All dimensions are approximate and may vary, and generally comprise the greater length by the greater width of the area. Note that actual usable floor area may vary from that stated, which includes open areas and finished below grade areas where applicable. Homes may be sited in reverse and Purchaser agrees to same. Steps, porch, deck and railings may vary at any exterior entrance including garage entrance. Boxing is not shown. Illustrations are artist's concept. The Agreement of Purchase and Sale prevails in the event of conflict or ambiguity. LT-363 E. & O.E.

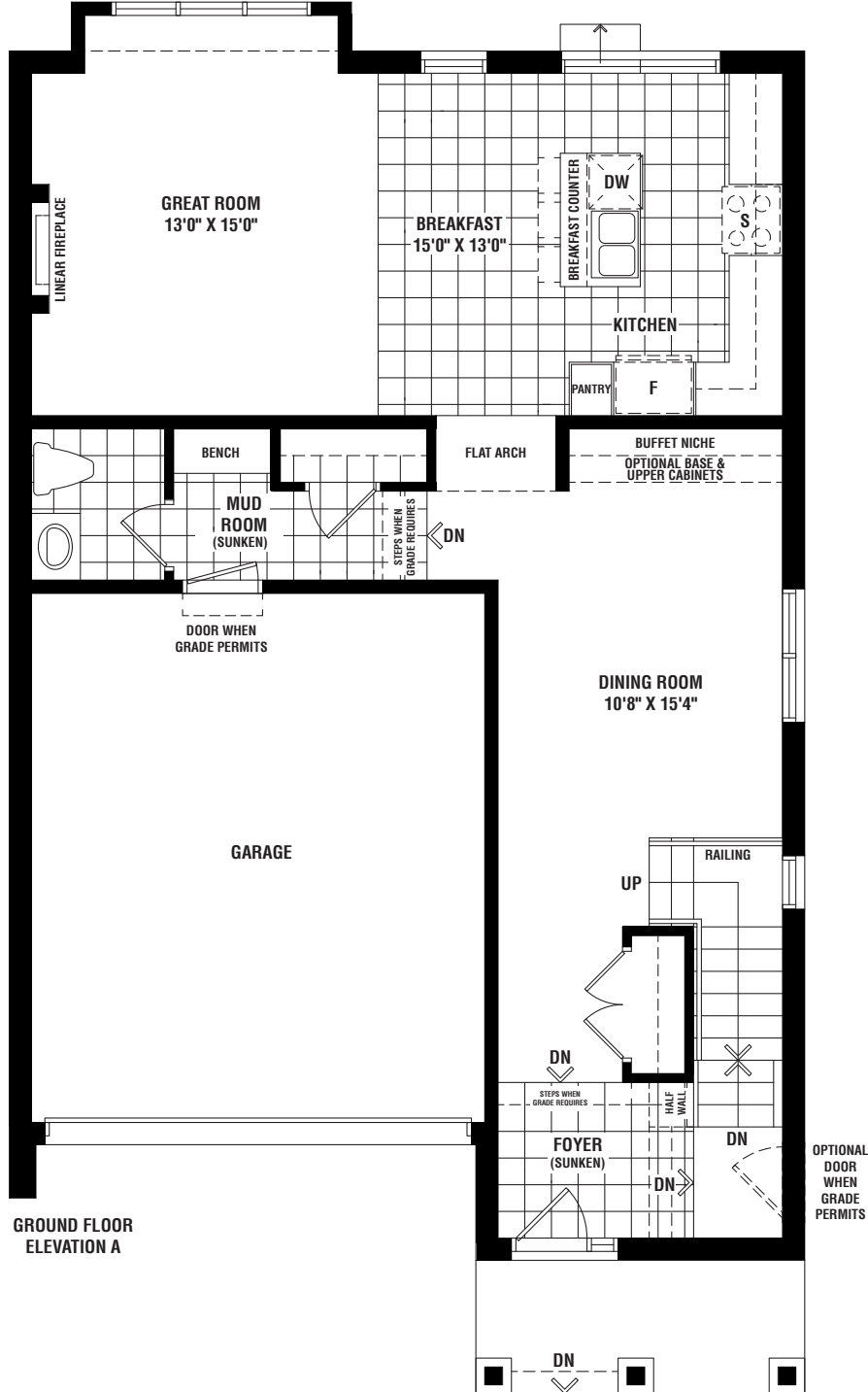
# THE KINGFISHER

2,341 sq.ft. – Elevation A | 2,355 sq.ft. – Elevation B  
(INCLUDES 67 SQ. FT. FINISHED BASEMENT)



## TRAILS OF WHITEVALE

WHERE MARKHAM MEETS PICKERING



**Sundial  
HOMES**

Floor plans, elevations, dimensions and details may be revised at Vendor's sole discretion. All dimensions are approximate and may vary, and generally comprise the greater length by the greater width of the area. Note that actual usable floor area may vary from that stated, which includes open areas and finished below grade areas where applicable. Homes may be sited in reverse and Purchaser agrees to same. Steps, porch, deck and railings may vary at any exterior entrance including garage entrance. Boxing is not shown. Illustrations are artist's concept. The Agreement of Purchase and Sale prevails in the event of conflict or ambiguity. LT-363 E. & O.E.

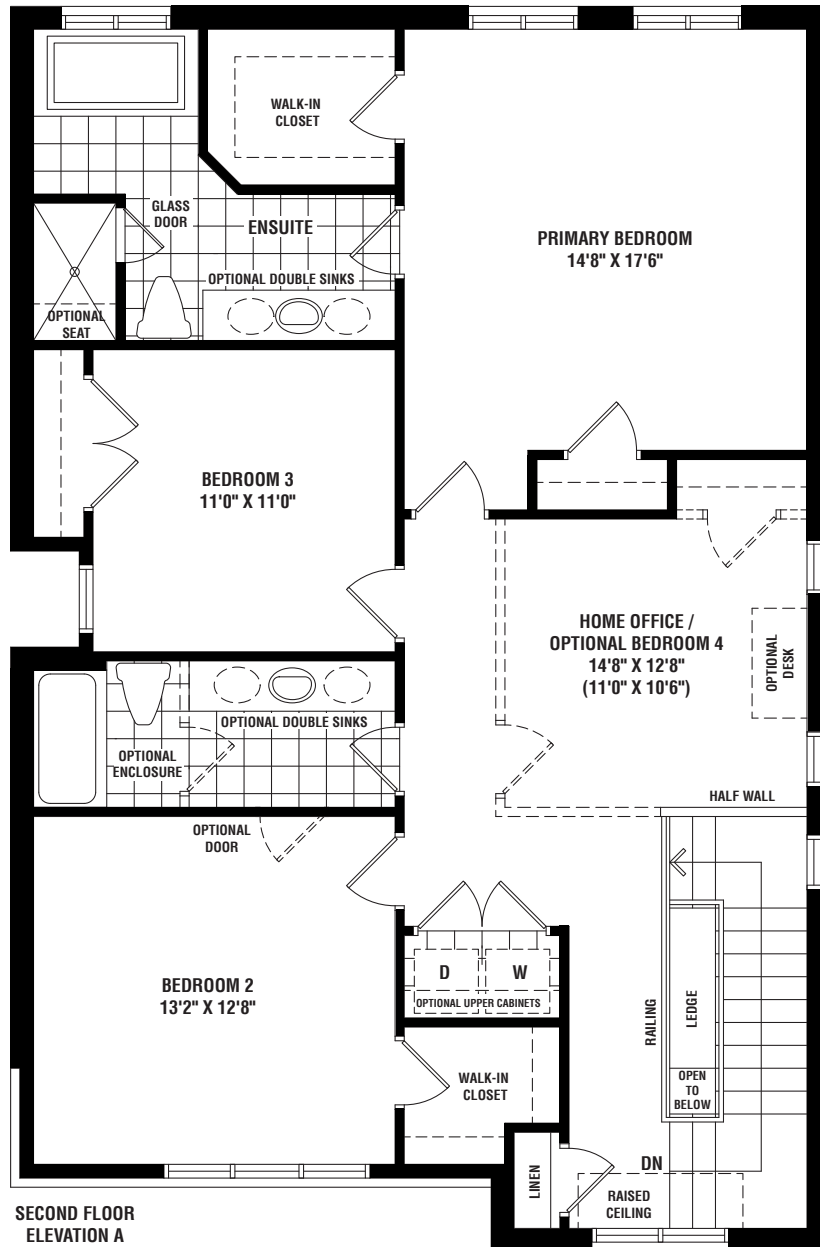
# THE KINGFISHER

2,341 sq.ft. – Elevation A | 2,355 sq.ft. – Elevation B  
(INCLUDES 67 SQ. FT. FINISHED BASEMENT)



## TRAILS OF WHITEVALE

WHERE MARKHAM MEETS PICKERING



**Sundial  
HOMES**

Floor plans, elevations, dimensions and details may be revised at Vendor's sole discretion. All dimensions are approximate and may vary, and generally comprise the greater length by the greater width of the area. Note that actual usable floor area may vary from that stated, which includes open areas and finished below grade areas where applicable. Homes may be sited in reverse and Purchaser agrees to same. Steps, porch, deck and railings may vary at any exterior entrance including garage entrance. Boxing is not shown. Illustrations are artist's concept. The Agreement of Purchase and Sale prevails in the event of conflict or ambiguity. LT-363 E. & O.E.

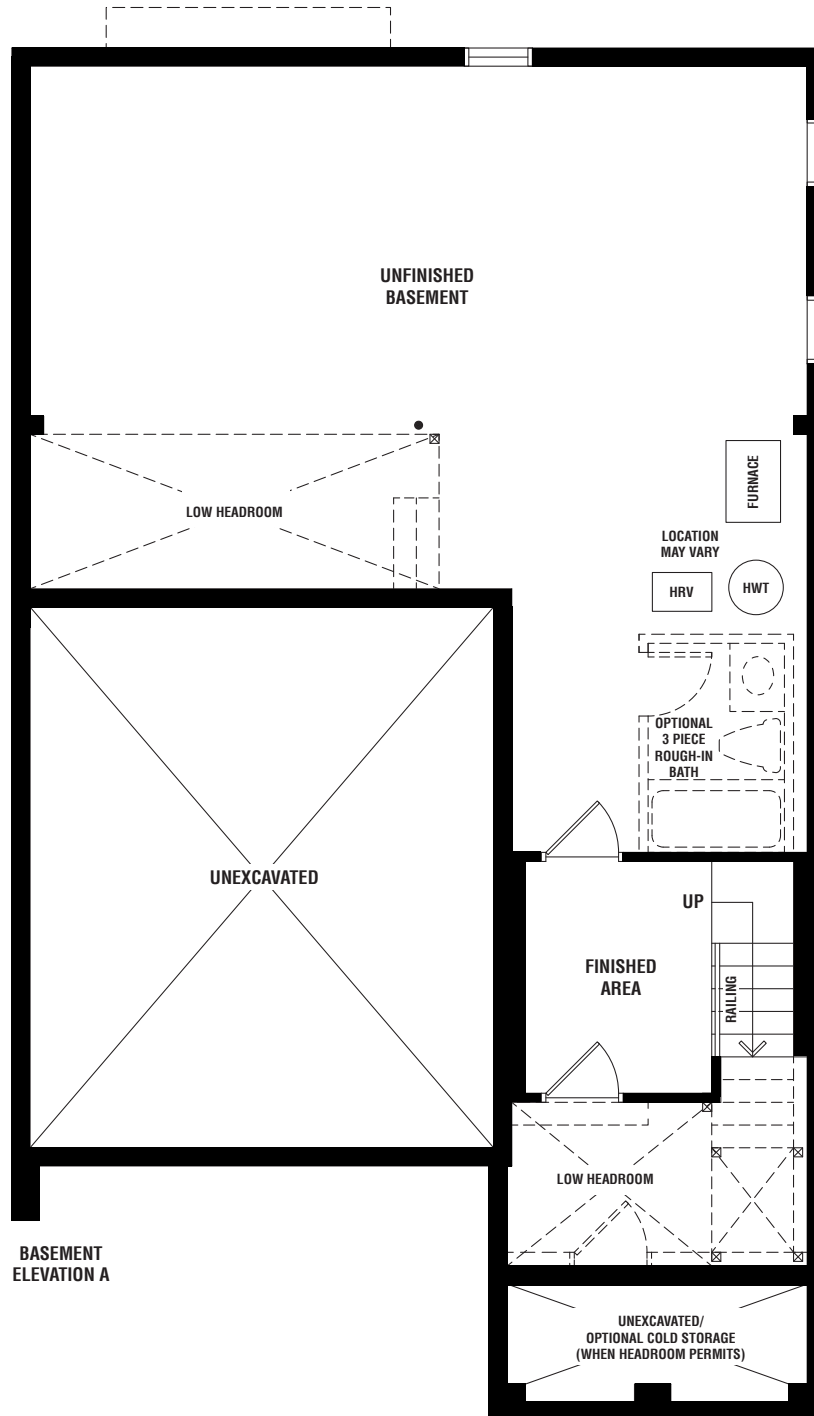
# THE KINGFISHER

2,341 sq.ft. – Elevation A | 2,355 sq.ft. – Elevation B  
(INCLUDES 67 SQ. FT. FINISHED BASEMENT)



## TRAILS OF WHITEVALE

WHERE MARKHAM MEETS PICKERING



**Sundial**  
HOMES

Floor plans, elevations, dimensions and details may be revised at Vendor's sole discretion. All dimensions are approximate and may vary, and generally comprise the greater length by the greater width of the area. Note that actual usable floor area may vary from that stated, which includes open areas and finished below grade areas where applicable. Homes may be sited in reverse and Purchaser agrees to same. Steps, porch, deck and railings may vary at any exterior entrance including garage entrance. Boxing is not shown. Illustrations are artist's concept. The Agreement of Purchase and Sale prevails in the event of conflict or ambiguity. LT-363 E. & O.E.

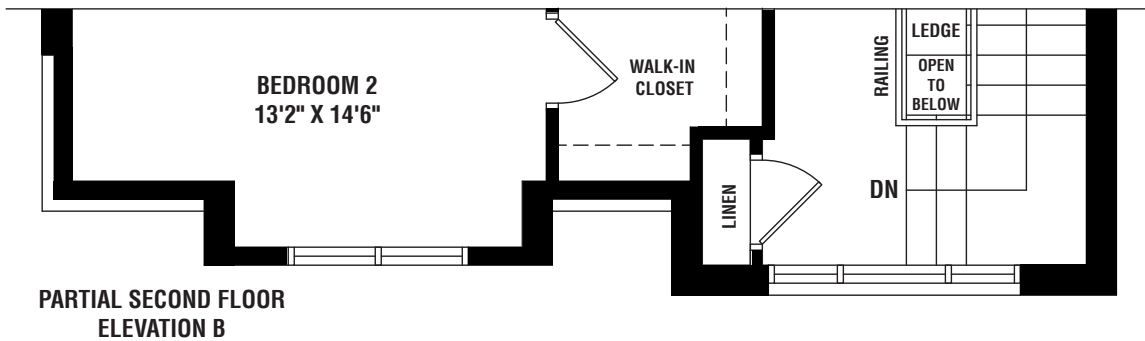
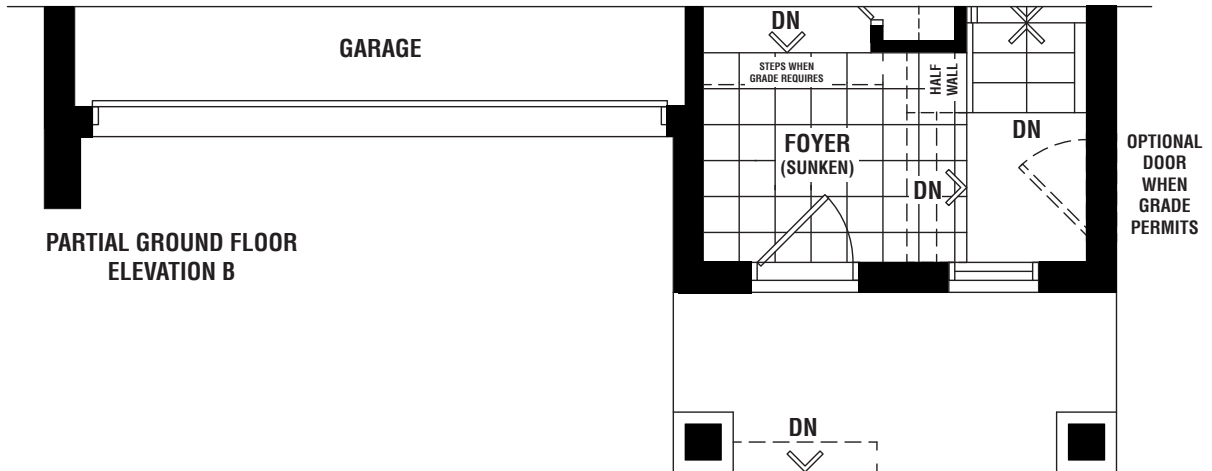
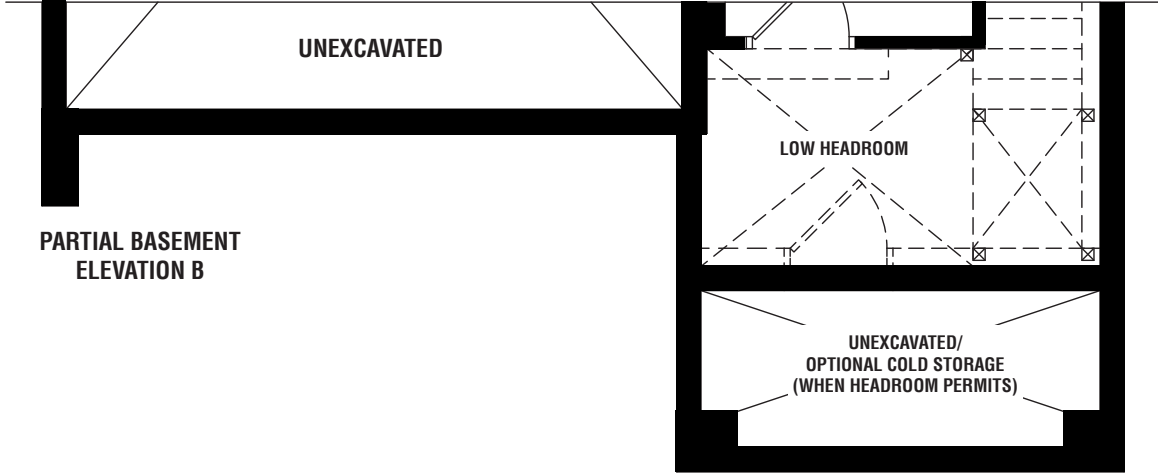
# THE KINGFISHER

2,341 sq.ft. – Elevation A | 2,355 sq.ft. – Elevation B  
(INCLUDES 67 SQ. FT. FINISHED BASEMENT)



## TRAILS OF WHITEVALE

WHERE MARKHAM MEETS PICKERING



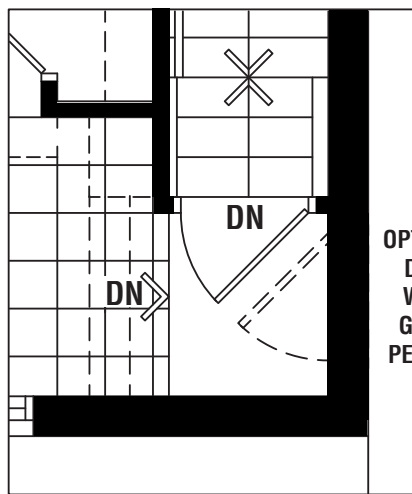
# THE KINGFISHER

2,341 sq.ft. – Elevation A | 2,355 sq.ft. – Elevation B  
(INCLUDES 67 SQ. FT. FINISHED BASEMENT)



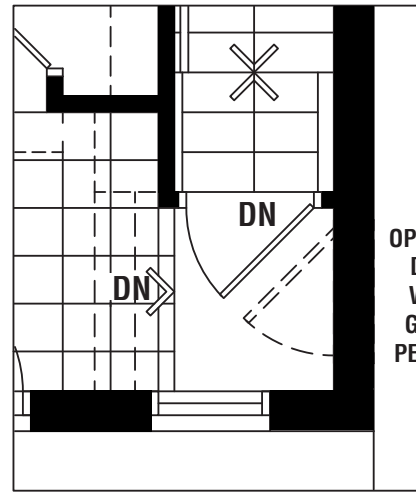
## TRAILS OF WHITEVALE

WHERE MARKHAM MEETS PICKERING



OPTIONAL  
DOOR  
WHEN  
GRADE  
PERMITS

**PARTIAL GROUND FLOOR  
OPTIONAL BASEMENT DOOR  
ELEVATION A**



OPTIONAL  
DOOR  
WHEN  
GRADE  
PERMITS

**PARTIAL GROUND FLOOR  
OPTIONAL BASEMENT DOOR  
ELEVATION B**

**Sundial  
HOMES**