

THE FIGUS

2,556 sq.ft. – Elevation A | 2,620 sq.ft. – Elevation AE
2,557 sq.ft. – Elevation B | 2,621 sq.ft. – Elevation BE



TRAILS OF
WHITEVALE

WHERE MARKHAM MEETS PICKERING



Front Elevation

ARTIST'S CONCEPT



Rear Elevation

ARTIST'S CONCEPT

Sundial
HOMES

Floor plans, elevations, dimensions and details may be revised at Vendor's sole discretion. All dimensions are approximate and may vary, and generally comprise the greater length by the greater width of the area. Note that actual usable floor area may vary from that stated, which includes open areas and finished below grade areas where applicable. Homes may be sited in reverse and Purchaser agrees to same. Steps, porch, deck and railings may vary at any exterior entrance including garage entrance. Boxing is not shown. Illustrations are artist's concept. The Agreement of Purchase and Sale prevails in the event of conflict or ambiguity. LT-204 E. & O.E.

THE FIGUS

2,556 sq.ft. – Elevation A | 2,620 sq.ft. – Elevation AE
2,557 sq.ft. – Elevation B | 2,621 sq.ft. – Elevation BE



TRAILS OF WHITEVALE

WHERE MARKHAM MEETS PICKERING



Front Elevation

ARTIST'S CONCEPT



Rear Elevation

ARTIST'S CONCEPT

**Sundial
HOMES**

Floor plans, elevations, dimensions and details may be revised at Vendor's sole discretion. All dimensions are approximate and may vary, and generally comprise the greater length by the greater width of the area. Note that actual usable floor area may vary from that stated, which includes open areas and finished below grade areas where applicable. Homes may be sited in reverse and Purchaser agrees to same. Steps, porch, deck and railings may vary at any exterior entrance including garage entrance. Boxing is not shown. Illustrations are artist's concept. The Agreement of Purchase and Sale prevails in the event of conflict or ambiguity. LT-204 E. & O.E.

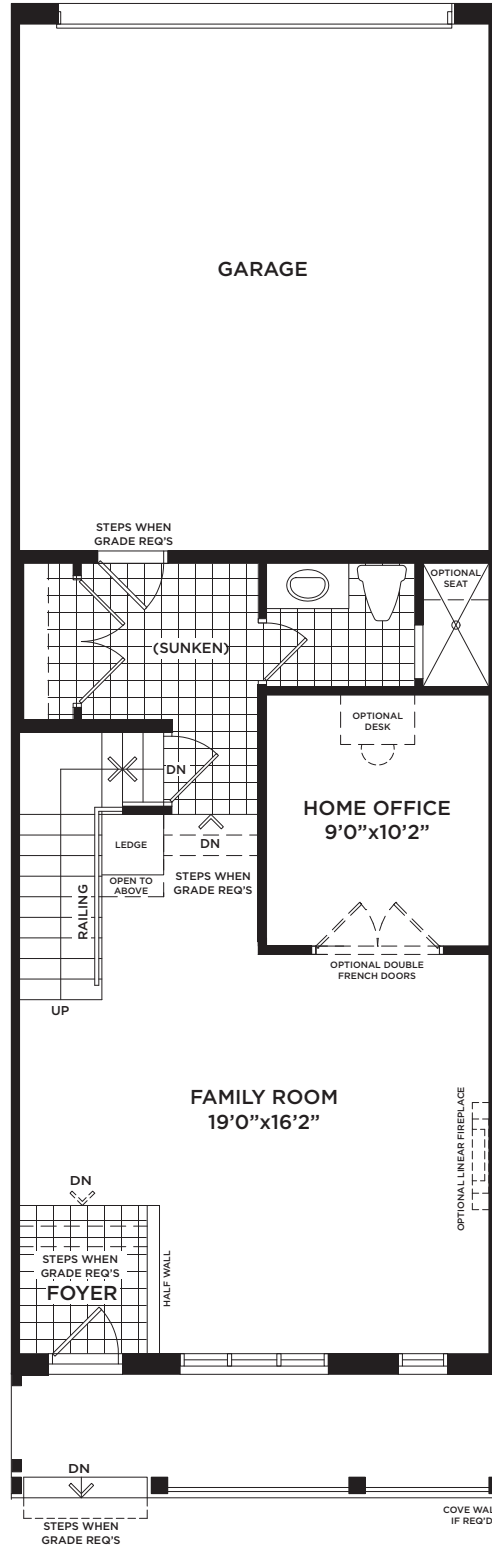
THE FICUS

2,556 sq.ft. – Elevation A | 2,620 sq.ft. – Elevation AE
2,557 sq.ft. – Elevation B | 2,621 sq.ft. – Elevation BE



TRAILS OF WHITEVALE

WHERE MARKHAM MEETS PICKERING



GROUND FLOOR
ELEVATION 'A'



Floor plans, elevations, dimensions and details may be revised at Vendor's sole discretion. All dimensions are approximate and may vary, and generally comprise the greater length by the greater width of the area. Note that actual usable floor area may vary from that stated, which includes open areas and finished below grade areas where applicable. Homes may be sited in reverse and Purchaser agrees to same. Steps, porch, deck and railings may vary at any exterior entrance including garage entrance. Boxing is not shown. Illustrations are artist's concept. The Agreement of Purchase and Sale prevails in the event of conflict or ambiguity. LT-204 E. & O.E.

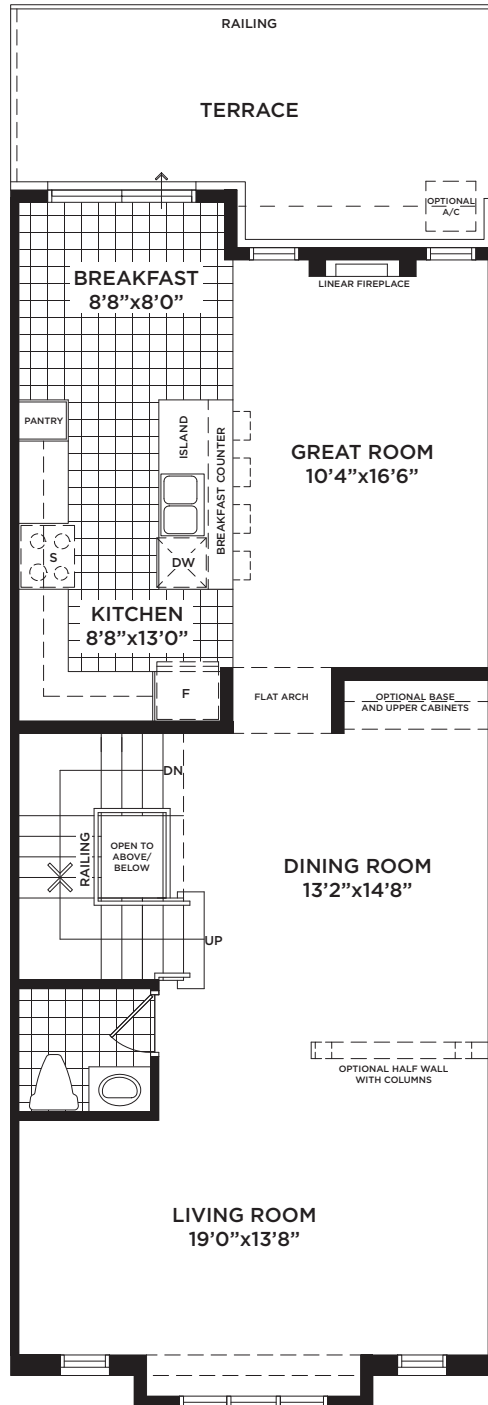
THE FICUS

2,556 sq.ft. – Elevation A | 2,620 sq.ft. – Elevation AE
 2,557 sq.ft. – Elevation B | 2,621 sq.ft. – Elevation BE



TRAILS OF WHITEVALE

WHERE MARKHAM MEETS PICKERING



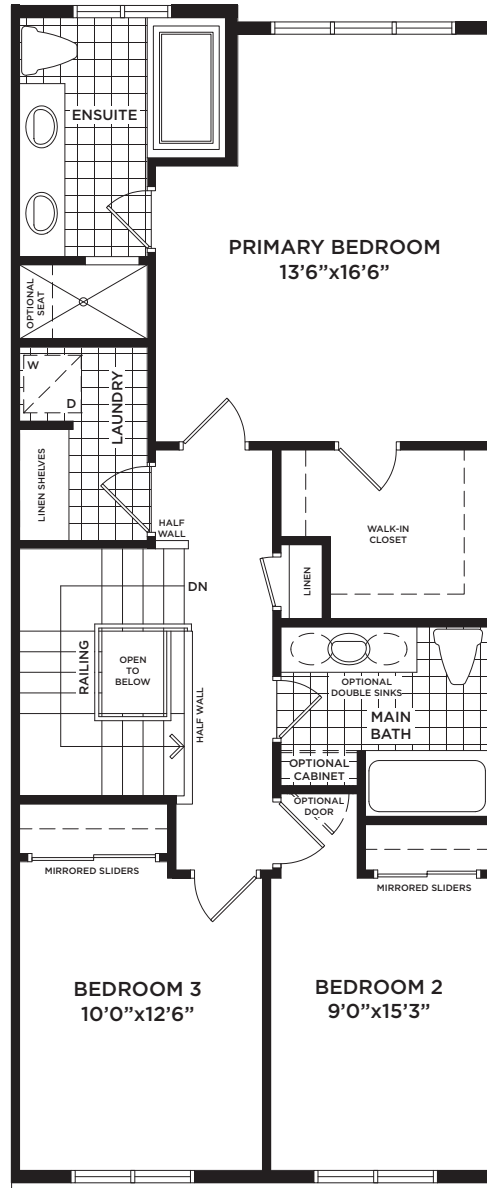
MAIN FLOOR
ELEVATION 'A'



Floor plans, elevations, dimensions and details may be revised at Vendor's sole discretion. All dimensions are approximate and may vary, and generally comprise the greater length by the greater width of the area. Note that actual usable floor area may vary from that stated, which includes open areas and finished below grade areas where applicable. Homes may be sited in reverse and Purchaser agrees to same. Steps, porch, deck and railings may vary at any exterior entrance including garage entrance. Boxing is not shown. Illustrations are artist's concept. The Agreement of Purchase and Sale prevails in the event of conflict or ambiguity. LT-204 E. & O.E.

THE FICUS

2,556 sq.ft. – Elevation A | 2,620 sq.ft. – Elevation AE
2,557 sq.ft. – Elevation B | 2,621 sq.ft. – Elevation BE



UPPER FLOOR
ELEVATION 'A'

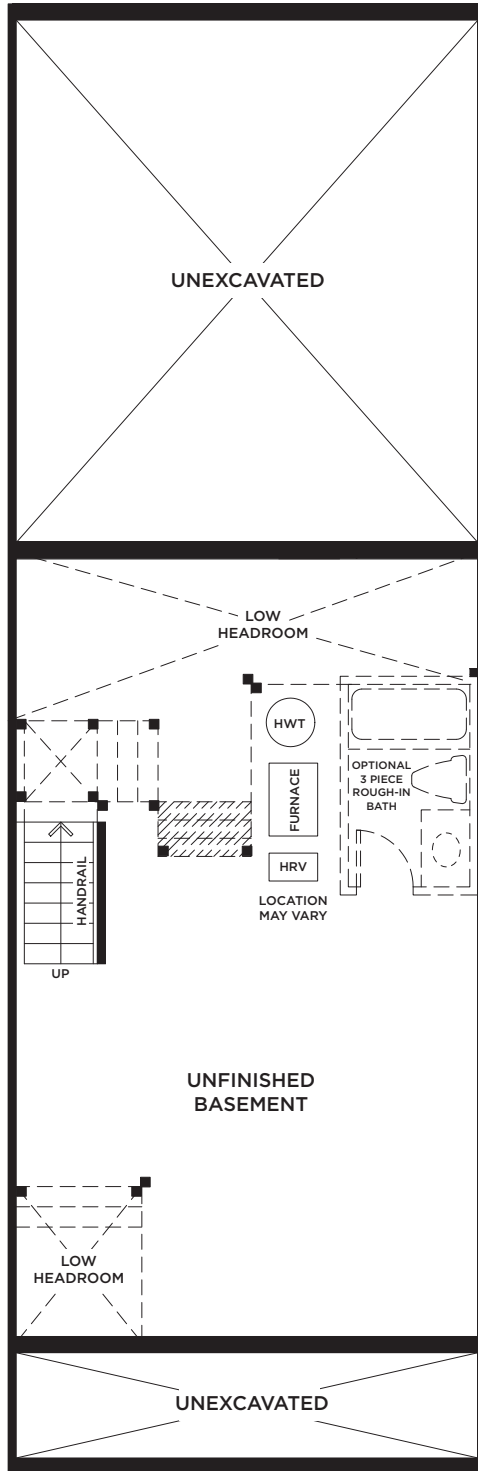
THE FICUS

2,556 sq.ft. – Elevation A | 2,620 sq.ft. – Elevation AE
 2,557 sq.ft. – Elevation B | 2,621 sq.ft. – Elevation BE



TRAILS OF WHITEVALE

WHERE MARKHAM MEETS PICKERING



**BASEMENT
ELEVATION 'A'**

COVE WALL
IF REQ'D



Floor plans, elevations, dimensions and details may be revised at Vendor's sole discretion. All dimensions are approximate and may vary, and generally comprise the greater length by the greater width of the area. Note that actual usable floor area may vary from that stated, which includes open areas and finished below grade areas where applicable. Homes may be sited in reverse and Purchaser agrees to same. Steps, porch, deck and railings may vary at any exterior entrance including garage entrance. Boxing is not shown. Illustrations are artist's concept. The Agreement of Purchase and Sale prevails in the event of conflict or ambiguity. LT-204 E. & O.E.

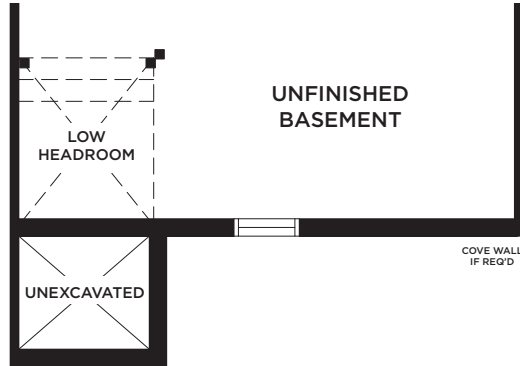
THE FICUS

2,556 sq.ft. – Elevation A | 2,620 sq.ft. – Elevation AE
 2,557 sq.ft. – Elevation B | 2,621 sq.ft. – Elevation BE

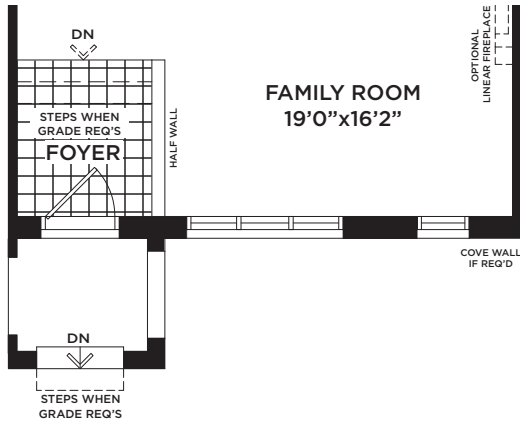


TRAILS OF
WHITEVALE

WHERE MARKHAM MEETS PICKERING



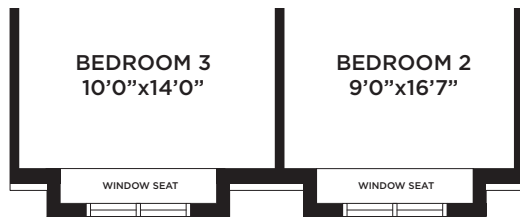
**PARTIAL BASEMENT
 ELEVATION 'B'**



**PARTIAL GROUND FLOOR
 ELEVATION 'B'**



**PARTIAL MAIN FLOOR
 ELEVATION 'B'**



**PARTIAL UPPER FLOOR
 ELEVATION 'B'**



Floor plans, elevations, dimensions and details may be revised at Vendor's sole discretion. All dimensions are approximate and may vary, and generally comprise the greater length by the greater width of the area. Note that actual usable floor area may vary from that stated, which includes open areas and finished below grade areas where applicable. Homes may be sited in reverse and Purchaser agrees to same. Steps, porch, deck and railings may vary at any exterior entrance including garage entrance. Boxing is not shown. Illustrations are artist's concept. The Agreement of Purchase and Sale prevails in the event of conflict or ambiguity. LT-204 E. & O.E.

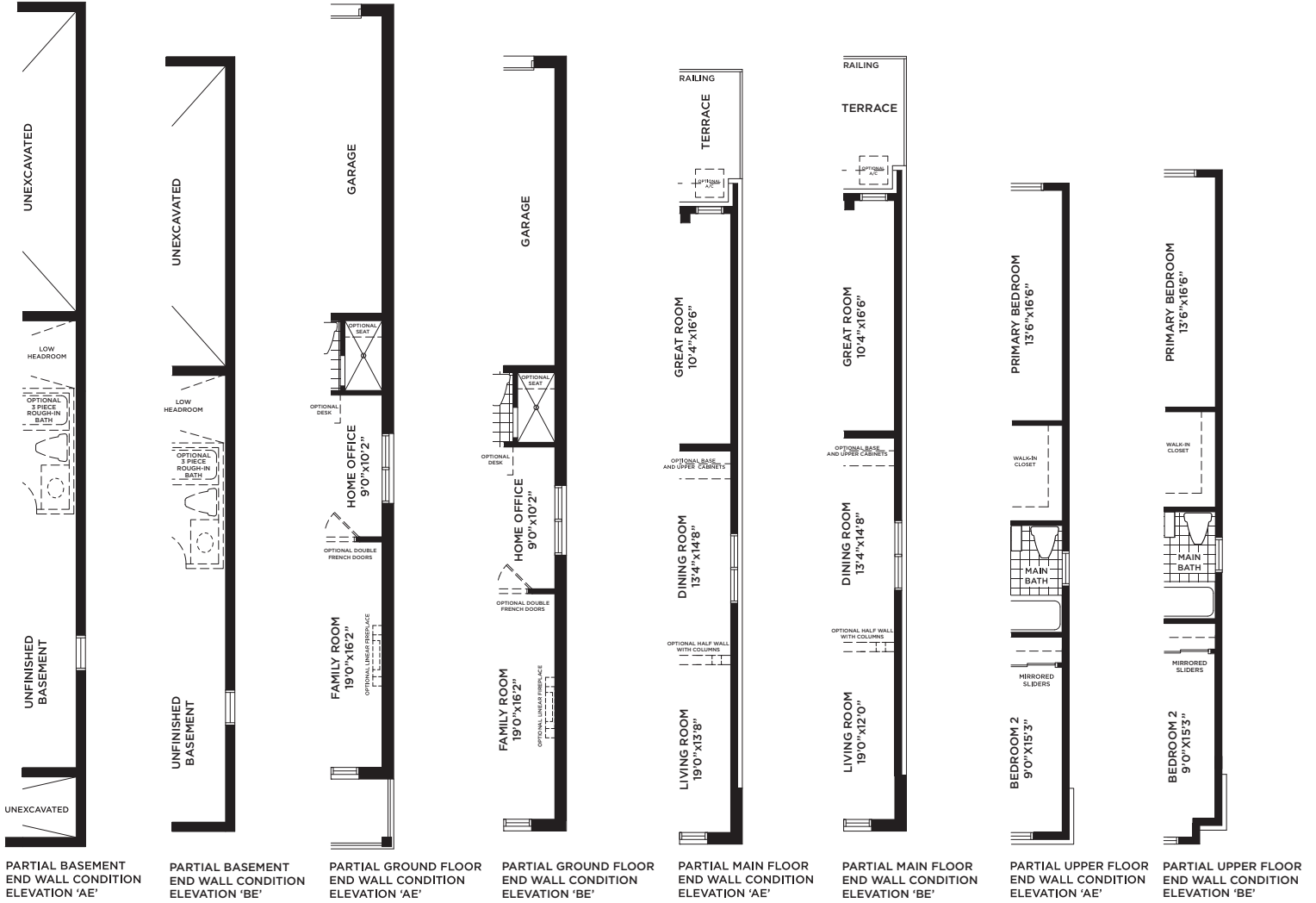
THE FICUS

2,556 sq.ft. – Elevation A | 2,620 sq.ft. – Elevation AE
 2,557 sq.ft. – Elevation B | 2,621 sq.ft. – Elevation BE



TRAILS OF WHITEVALE

WHERE MARKHAM MEETS PICKERING



Floor plans, elevations, dimensions and details may be revised at Vendor's sole discretion. All dimensions are approximate and may vary, and generally comprise the greater length by the greater width of the area. Note that actual usable floor area may vary from that stated, which includes open areas and finished below grade areas where applicable. Homes may be sited in reverse and Purchaser agrees to same. Steps, porch, deck and railings may vary at any exterior entrance including garage entrance. Boxing is not shown. Illustrations are artist's concept. The Agreement of Purchase and Sale prevails in the event of conflict or ambiguity. LT-204 E. & O.E.