

THE PINE

1,838 sq.ft. – Elevation A | 1,894 sq.ft. – Elevation AE
1,903 sq.ft. – Elevation B | 1,961 sq.ft. – Elevation BE



TRAILS OF WHITEVALE

WHERE MARKHAM MEETS PICKERING



Front Elevation

ARTIST'S CONCEPT



Rear Elevation

ARTIST'S CONCEPT

**Sundial
HOMES**

Floor plans, elevations, dimensions and details may be revised at Vendor's sole discretion. All dimensions are approximate and may vary, and generally comprise the greater length by the greater width of the area. Note that actual usable floor area may vary from that stated, which includes open areas and finished below grade areas where applicable. Homes may be sited in reverse and Purchaser agrees to same. Steps, porch, deck and railings may vary at any exterior entrance including garage entrance. Boxing is not shown. Illustrations are artist's concept. The Agreement of Purchase and Sale prevails in the event of conflict or ambiguity. LT-174 E. & O.E.

THE PINE

1,838 sq.ft. – Elevation A | 1,894 sq.ft. – Elevation AE
1,903 sq.ft. – Elevation B | 1,961 sq.ft. – Elevation BE



TRAILS OF WHITEVALE

WHERE MARKHAM MEETS PICKERING



Front Elevation

ARTIST'S CONCEPT



Rear Elevation

ARTIST'S CONCEPT

**Sundial
HOMES**

Floor plans, elevations, dimensions and details may be revised at Vendor's sole discretion. All dimensions are approximate and may vary, and generally comprise the greater length by the greater width of the area. Note that actual usable floor area may vary from that stated, which includes open areas and finished below grade areas where applicable. Homes may be sited in reverse and Purchaser agrees to same. Steps, porch, deck and railings may vary at any exterior entrance including garage entrance. Boxing is not shown. Illustrations are artist's concept. The Agreement of Purchase and Sale prevails in the event of conflict or ambiguity. LT-174 E. & O.E.

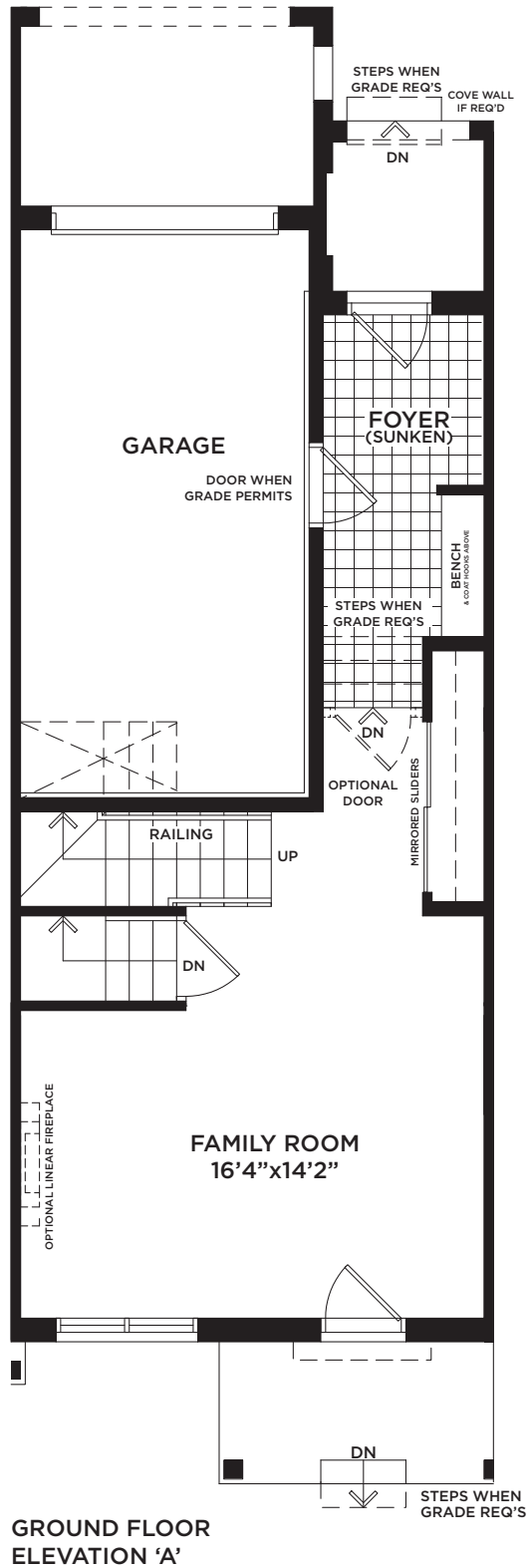
THE PINE

1,838 sq.ft. – Elevation A | 1,894 sq.ft. – Elevation AE
1,903 sq.ft. – Elevation B | 1,961 sq.ft. – Elevation BE



TRAILS OF WHITEVALE

WHERE MARKHAM MEETS PICKERING



**GROUND FLOOR
ELEVATION 'A'**



Floor plans, elevations, dimensions and details may be revised at Vendor's sole discretion. All dimensions are approximate and may vary, and generally comprise the greater length by the greater width of the area. Note that actual usable floor area may vary from that stated, which includes open areas and finished below grade areas where applicable. Homes may be sited in reverse and Purchaser agrees to same. Steps, porch, deck and railings may vary at any exterior entrance including garage entrance. Boxing is not shown. Illustrations are artist's concept. The Agreement of Purchase and Sale prevails in the event of conflict or ambiguity. LT-174 E. & O.E.

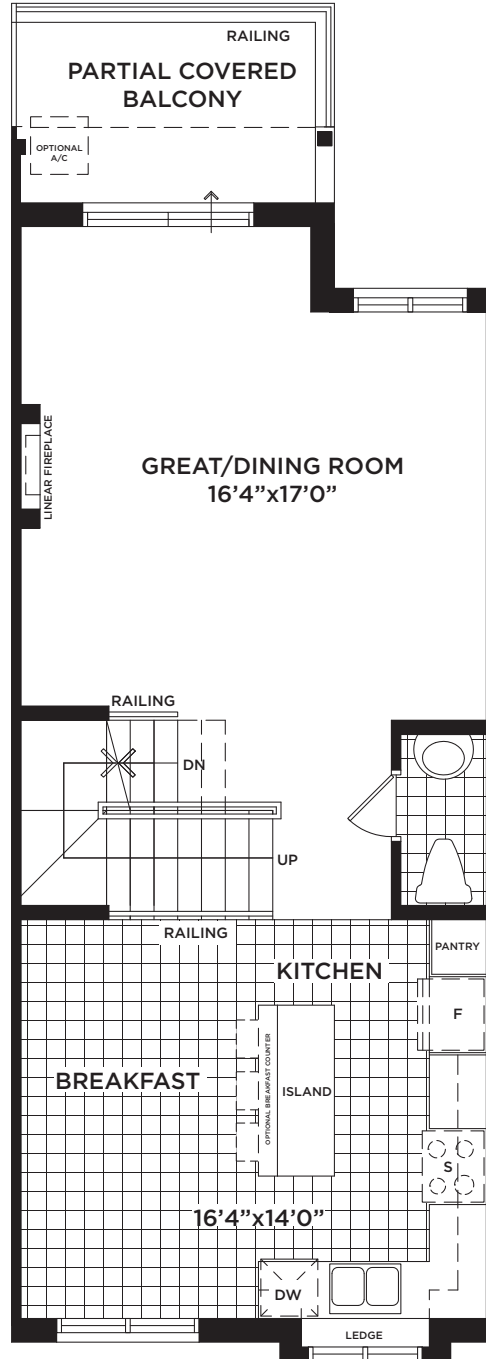
THE PINE

1,838 sq.ft. – Elevation A | 1,894 sq.ft. – Elevation AE
 1,903 sq.ft. – Elevation B | 1,961 sq.ft. – Elevation BE



TRAILS OF WHITEVALE

WHERE MARKHAM MEETS PICKERING



**MAIN FLOOR
 ELEVATION 'A'**



Floor plans, elevations, dimensions and details may be revised at Vendor's sole discretion. All dimensions are approximate and may vary, and generally comprise the greater length by the greater width of the area. Note that actual usable floor area may vary from that stated, which includes open areas and finished below grade areas where applicable. Homes may be sited in reverse and Purchaser agrees to same. Steps, porch, deck and railings may vary at any exterior entrance including garage entrance. Boxing is not shown. Illustrations are artist's concept. The Agreement of Purchase and Sale prevails in the event of conflict or ambiguity. LT-174 E. & O.E.

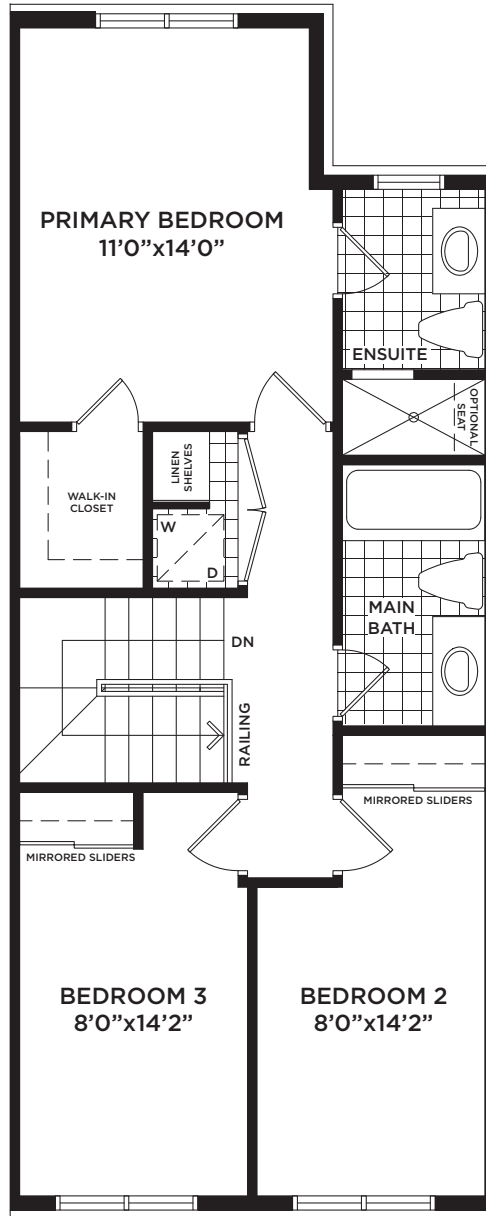
THE PINE

1,838 sq.ft. – Elevation A | 1,894 sq.ft. – Elevation AE
1,903 sq.ft. – Elevation B | 1,961 sq.ft. – Elevation BE



TRAILS OF
WHITEVALE

WHERE MARKHAM MEETS PICKERING



UPPER FLOOR
ELEVATION 'A'



Floor plans, elevations, dimensions and details may be revised at Vendor's sole discretion. All dimensions are approximate and may vary, and generally comprise the greater length by the greater width of the area. Note that actual usable floor area may vary from that stated, which includes open areas and finished below grade areas where applicable. Homes may be sited in reverse and Purchaser agrees to same. Steps, porch, deck and railings may vary at any exterior entrance including garage entrance. Boxing is not shown. Illustrations are artist's concept. The Agreement of Purchase and Sale prevails in the event of conflict or ambiguity. LT-174 E. & O.E.

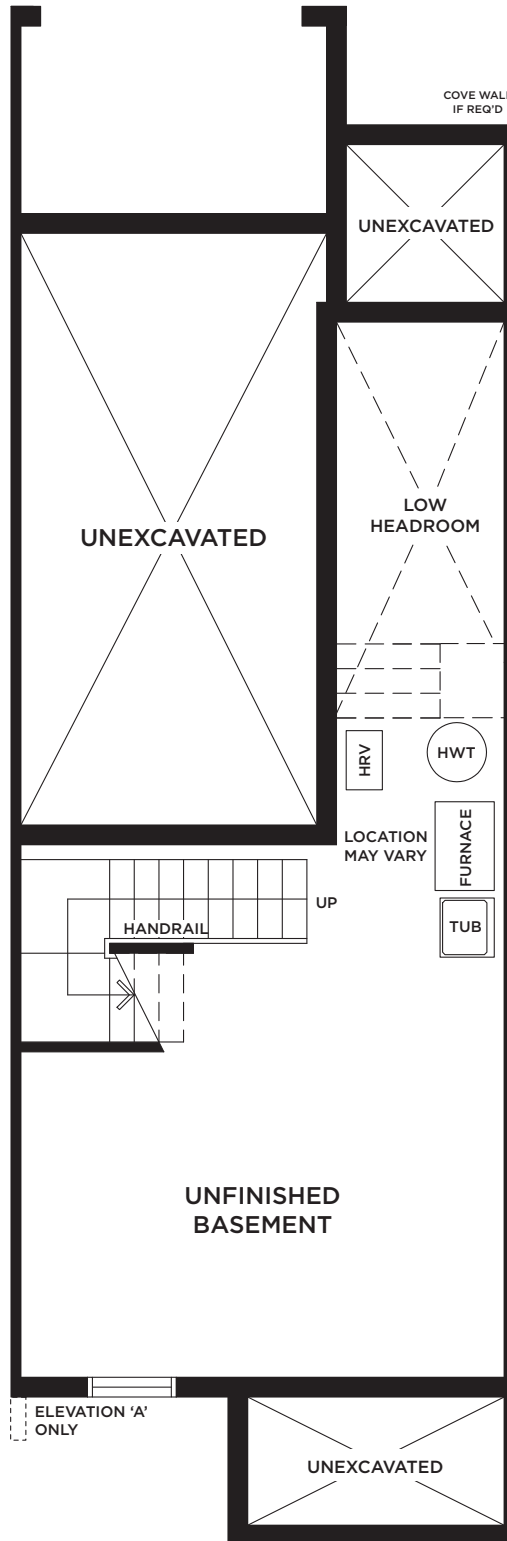
THE PINE

1,838 sq.ft. – Elevation A | 1,894 sq.ft. – Elevation AE
1,903 sq.ft. – Elevation B | 1,961 sq.ft. – Elevation BE



TRAILS OF WHITEVALE

WHERE MARKHAM MEETS PICKERING



**BASEMENT
ELEVATIONS 'A' & 'B'**



Floor plans, elevations, dimensions and details may be revised at Vendor's sole discretion. All dimensions are approximate and may vary, and generally comprise the greater length by the greater width of the area. Note that actual usable floor area may vary from that stated, which includes open areas and finished below grade areas where applicable. Homes may be sited in reverse and Purchaser agrees to same. Steps, porch, deck and railings may vary at any exterior entrance including garage entrance. Boxing is not shown. Illustrations are artist's concept. The Agreement of Purchase and Sale prevails in the event of conflict or ambiguity. LT-174 E. & O.E.

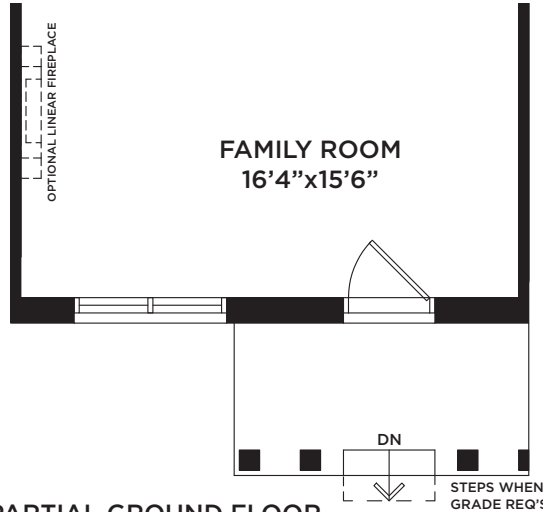
THE PINE

1,838 sq.ft. – Elevation A | 1,894 sq.ft. – Elevation AE
1,903 sq.ft. – Elevation B | 1,961 sq.ft. – Elevation BE

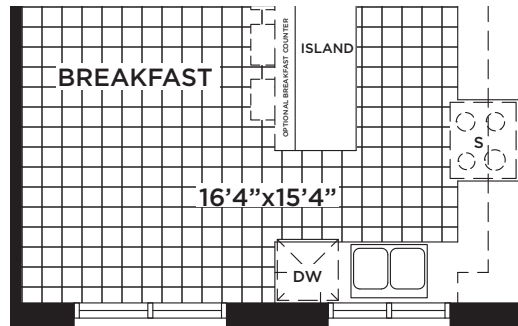


TRAILS OF WHITEVALE

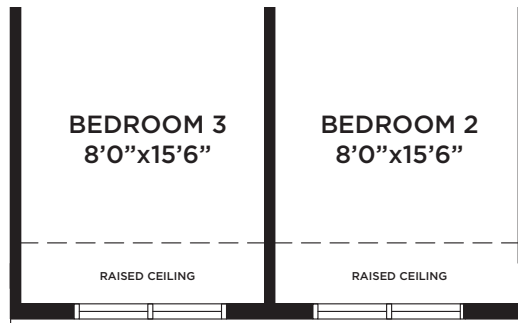
WHERE MARKHAM MEETS PICKERING



**PARTIAL GROUND FLOOR
ELEVATION 'B'**



**PARTIAL MAIN FLOOR
ELEVATION 'B'**



**PARTIAL UPPER FLOOR
ELEVATION 'B'**

**Sundial
HOMES**

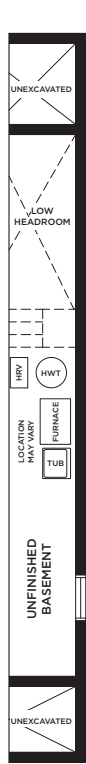
THE PINE

1,838 sq.ft. – Elevation A | 1,894 sq.ft. – Elevation AE
 1,903 sq.ft. – Elevation B | 1,961 sq.ft. – Elevation BE

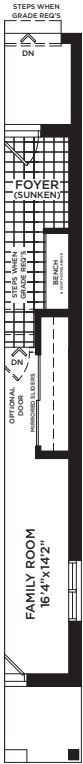


TRAILS OF WHITEVALE

WHERE MARKHAM MEETS PICKERING



PARTIAL BASEMENT
 END WALL CONDITION
 ELEVATION 'AE'



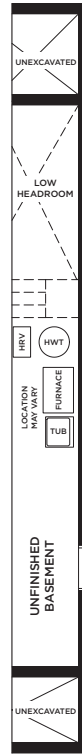
PARTIAL GROUND FLOOR
 END WALL CONDITION
 ELEVATION 'AE'



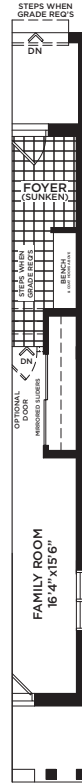
PARTIAL MAIN FLOOR
 END WALL CONDITION
 ELEVATION 'AE'



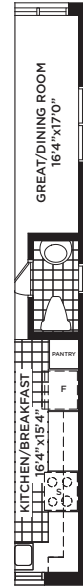
PARTIAL UPPER FLOOR
 END WALL CONDITION
 ELEVATION 'AE'



PARTIAL BASEMENT
 END WALL CONDITION
 ELEVATION 'BE'



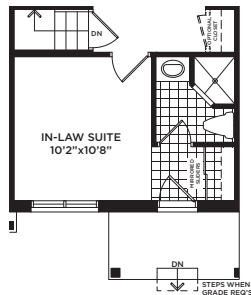
PARTIAL GROUND FLOOR
 END WALL CONDITION
 ELEVATION 'BE'



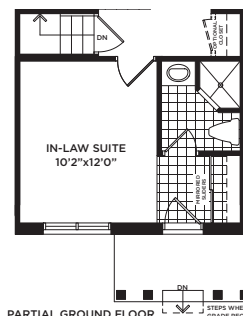
PARTIAL MAIN FLOOR
 END WALL CONDITION
 ELEVATION 'BE'



PARTIAL UPPER FLOOR
 END WALL CONDITION
 ELEVATION 'BE'



PARTIAL GROUND FLOOR
 OPTIONAL IN-LAW SUITE
 ELEVATION 'A'



PARTIAL GROUND FLOOR
 OPTIONAL IN-LAW SUITE
 ELEVATION 'B'



Floor plans, elevations, dimensions and details may be revised at Vendor's sole discretion. All dimensions are approximate and may vary, and generally comprise the greater length by the greater width of the area. Note that actual usable floor area may vary from that stated, which includes open areas and finished below grade areas where applicable. Homes may be sited in reverse and Purchaser agrees to same. Steps, porch, deck and railings may vary at any exterior entrance including garage entrance. Boxing is not shown. Illustrations are artist's concept. The Agreement of Purchase and Sale prevails in the event of conflict or ambiguity. LT-174 E. & O.E.