

THE ROBIN

2,556 sq.ft. – Elevation A | 2,573 sq.ft. – Elevation B
(INCLUDES 84 SQ. FT. FINISHED BASEMENT)



TRAILS OF WHITEVALE

WHERE MARKHAM MEETS PICKERING



ELEVATION A



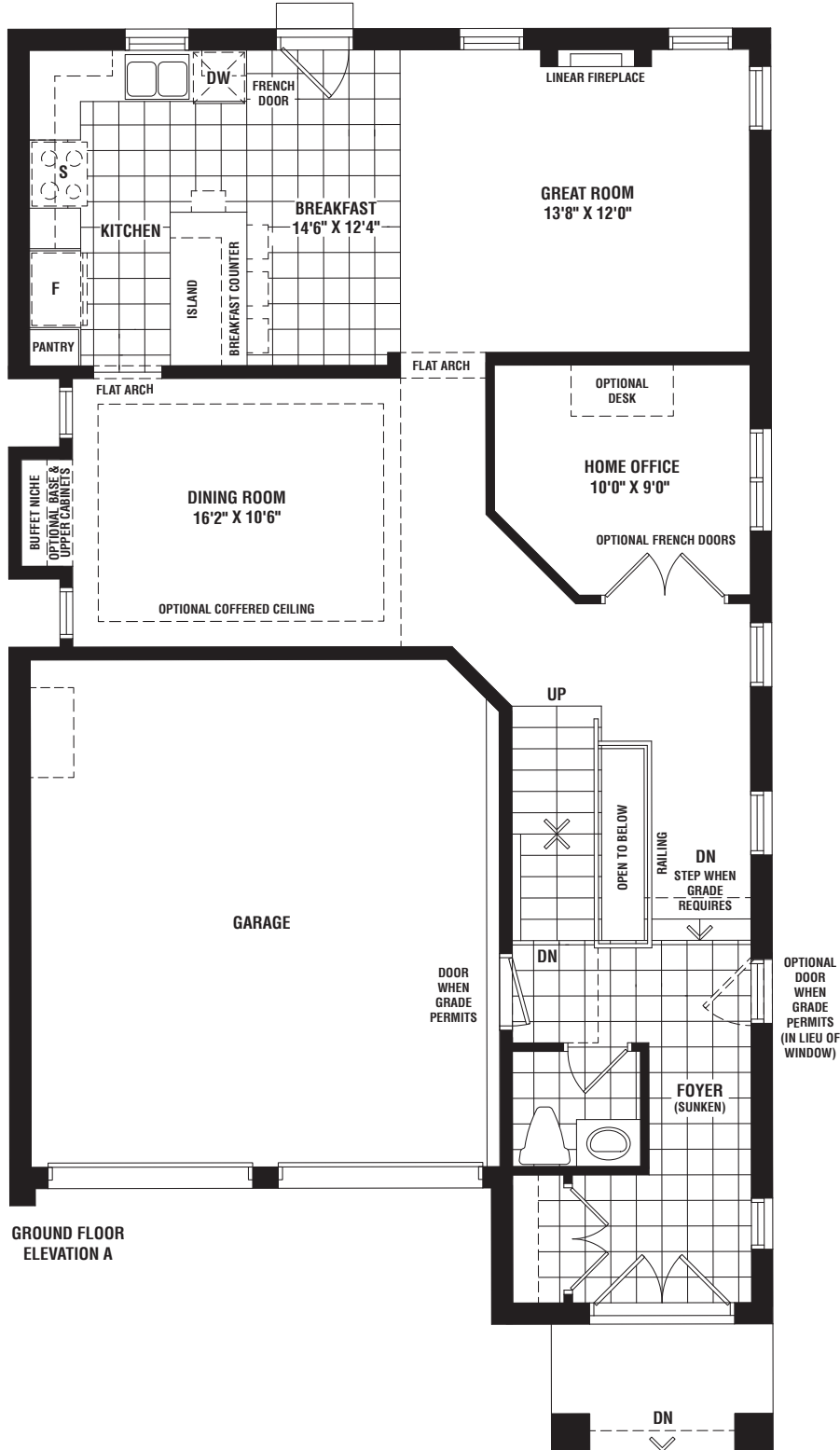
ELEVATION B

Sundial
HOMES

Floor plans, elevations, dimensions and details may be revised at Vendor's sole discretion. All dimensions are approximate and may vary, and generally comprise the greater length by the greater width of the area. Note that actual usable floor area may vary from that stated, which includes open areas and finished below grade areas where applicable. Homes may be sited in reverse and Purchaser agrees to same. Steps, porch, deck and railings may vary at any exterior entrance including garage entrance. Boxing is not shown. Illustrations are artist's concept. The Agreement of Purchase and Sale prevails in the event of conflict or ambiguity. LT-365 E. & O.E.

THE ROBIN

2,556 sq.ft. – Elevation A | 2,573 sq.ft. – Elevation B
(INCLUDES 84 SQ. FT. FINISHED BASEMENT)



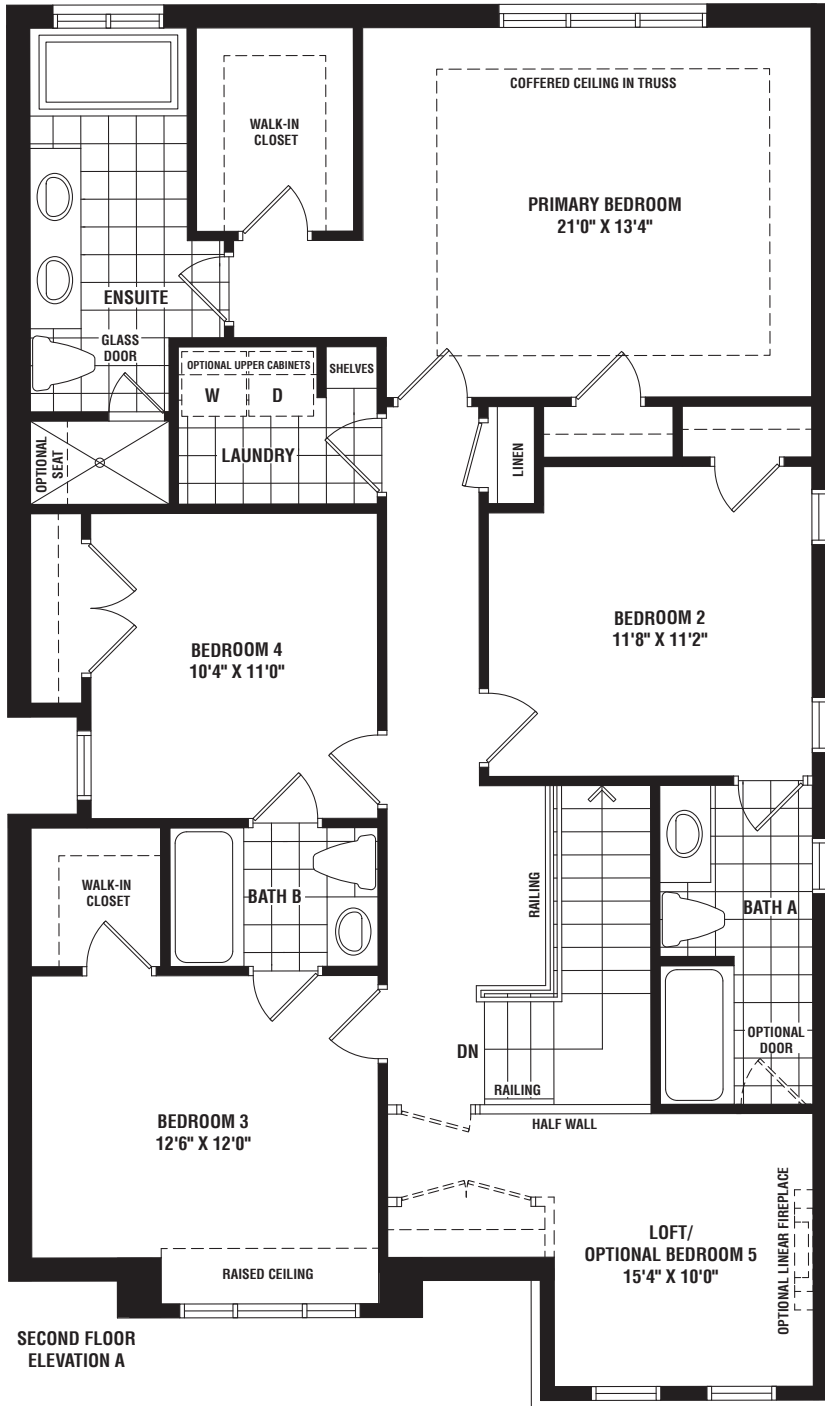
THE ROBIN

2,556 sq.ft. – Elevation A | 2,573 sq.ft. – Elevation B
(INCLUDES 84 SQ. FT. FINISHED BASEMENT)



TRAILS OF WHITEVALE

WHERE MARKHAM MEETS PICKERING



SECOND FLOOR
ELEVATION A



Floor plans, elevations, dimensions and details may be revised at Vendor's sole discretion. All dimensions are approximate and may vary, and generally comprise the greater length by the greater width of the area. Note that actual usable floor area may vary from that stated, which includes open areas and finished below grade areas where applicable. Homes may be sited in reverse and Purchaser agrees to same. Steps, porch, deck and railings may vary at any exterior entrance including garage entrance. Boxing is not shown. Illustrations are artist's concept. The Agreement of Purchase and Sale prevails in the event of conflict or ambiguity. LT-365 E. & O.E.

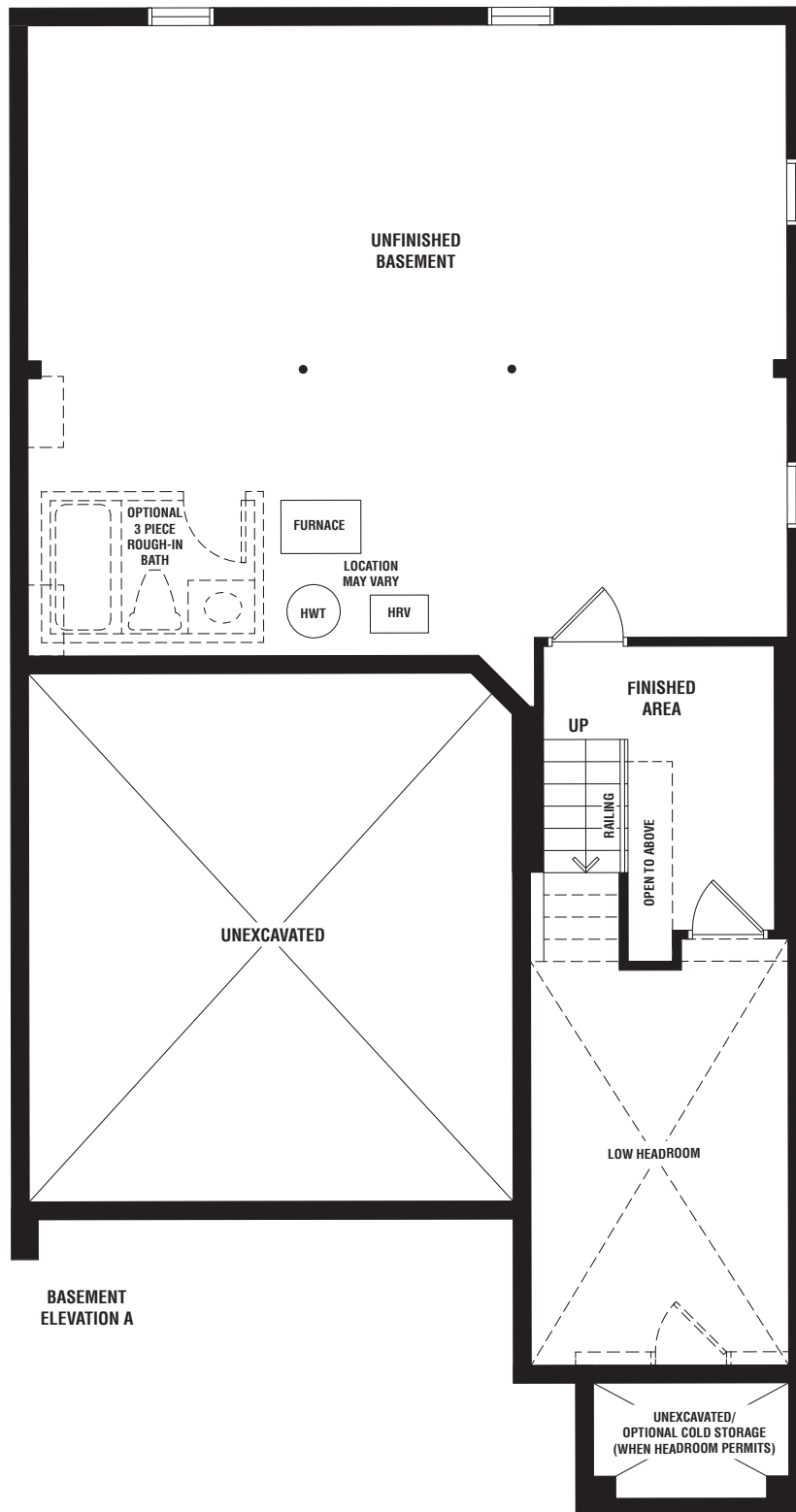
THE ROBIN

2,556 sq.ft. – Elevation A | 2,573 sq.ft. – Elevation B
(INCLUDES 84 SQ. FT. FINISHED BASEMENT)



TRAILS OF WHITEVALE

WHERE MARKHAM MEETS PICKERING



**Sundial
HOMES**

Floor plans, elevations, dimensions and details may be revised at Vendor's sole discretion. All dimensions are approximate and may vary, and generally comprise the greater length by the greater width of the area. Note that actual usable floor area may vary from that stated, which includes open areas and finished below grade areas where applicable. Homes may be sited in reverse and Purchaser agrees to same. Steps, porch, deck and railings may vary at any exterior entrance including garage entrance. Boxing is not shown. Illustrations are artist's concept. The Agreement of Purchase and Sale prevails in the event of conflict or ambiguity. LT-365 E. & O.E.

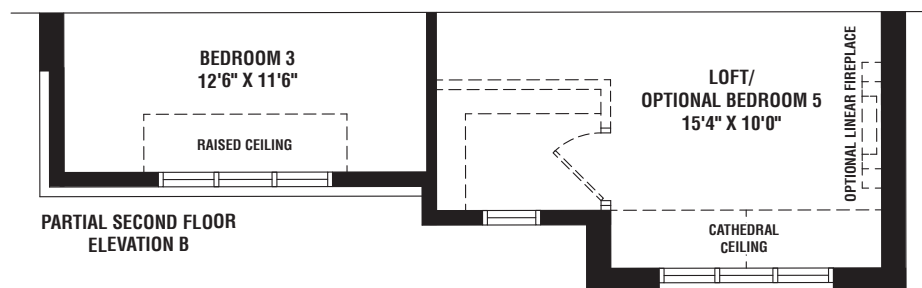
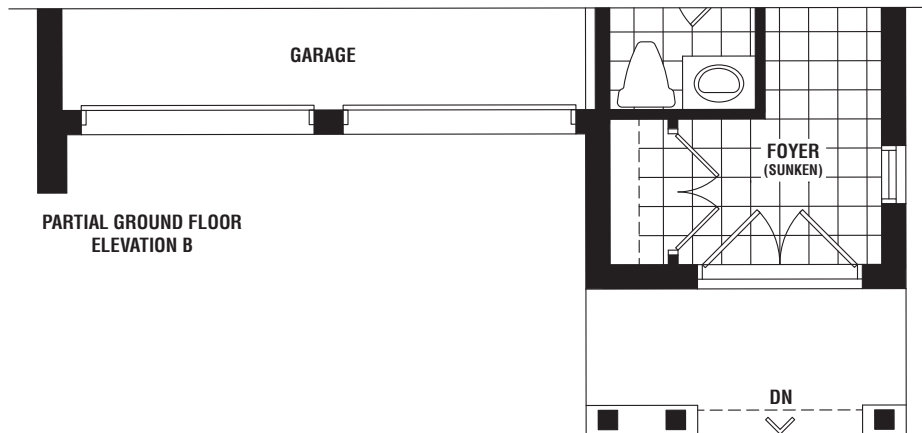
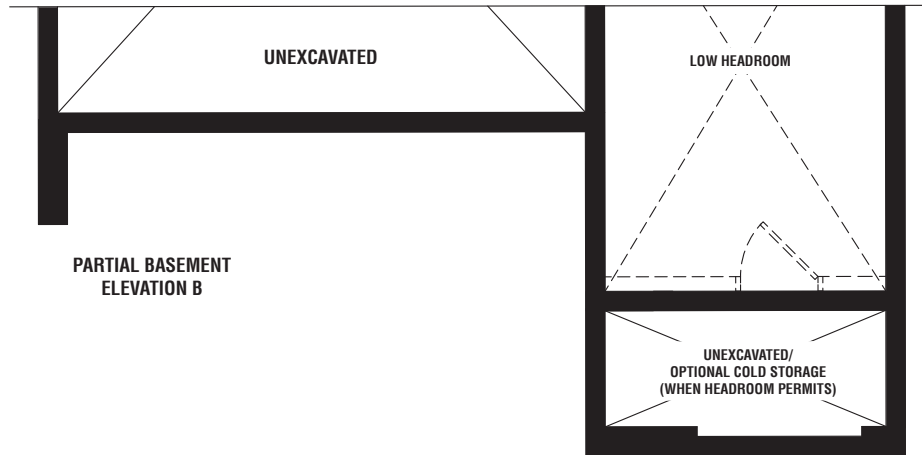
THE ROBIN

2,556 sq.ft. – Elevation A | 2,573 sq.ft. – Elevation B
(INCLUDES 84 SQ. FT. FINISHED BASEMENT)



TRAILS OF WHITEVALE

WHERE MARKHAM MEETS PICKERING



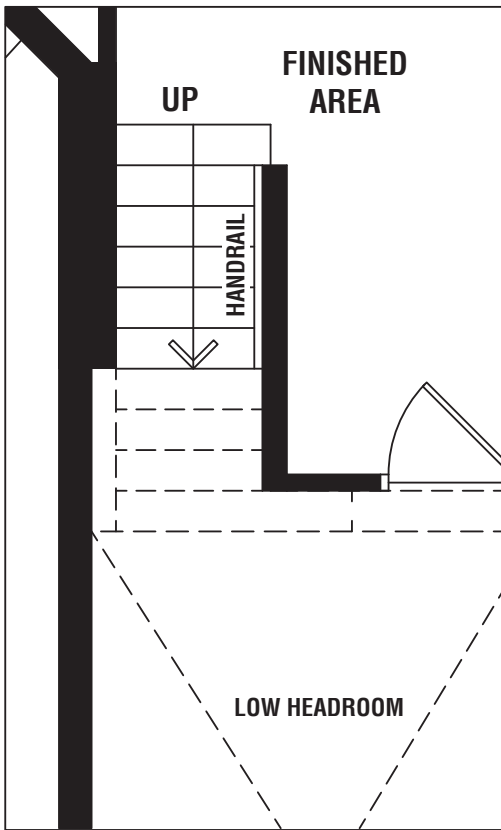
THE ROBIN

2,556 sq.ft. – Elevation A | 2,573 sq.ft. – Elevation B
 (INCLUDES 84 SQ. FT. FINISHED BASEMENT)

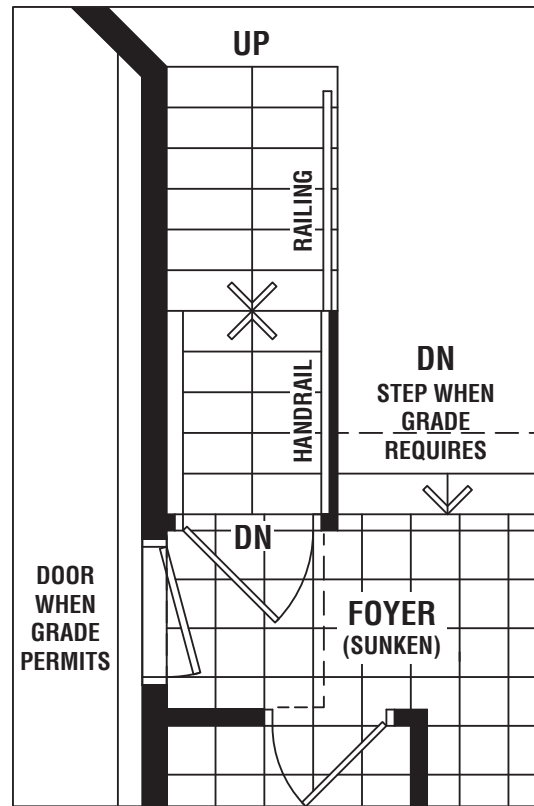


TRAILS OF
WHITEVALE

WHERE MARKHAM MEETS PICKERING



**PARTIAL BASEMENT
 OPTIONAL BASEMENT DOOR
 ELEVATION A & B**



**PARTIAL GROUND FLOOR
 OPTIONAL BASEMENT DOOR
 ELEVATION A & B**



Floor plans, elevations, dimensions and details may be revised at Vendor's sole discretion. All dimensions are approximate and may vary, and generally comprise the greater length by the greater width of the area. Note that actual usable floor area may vary from that stated, which includes open areas and finished below grade areas where applicable. Homes may be sited in reverse and Purchaser agrees to same. Steps, porch, deck and railings may vary at any exterior entrance including garage entrance. Boxing is not shown. Illustrations are artist's concept. The Agreement of Purchase and Sale prevails in the event of conflict or ambiguity. LT-365 E. & O.E.