

THE PILEA (CORNER)

2,901 sq.ft. – Elevation AE | 3,004 sq.ft. – Elevation BE



TRAILS OF WHITEVALE

WHERE MARKHAM MEETS PICKERING



Front Elevation (Corner)

ARTIST'S CONCEPT



Rear Elevation (Corner)

ARTIST'S CONCEPT

**Sundial
HOMES**

Floor plans, elevations, dimensions and details may be revised at Vendor's sole discretion. All dimensions are approximate and may vary, and generally comprise the greater length by the greater width of the area. Note that actual usable floor area may vary from that stated, which includes open areas and finished below grade areas where applicable. Homes may be sited in reverse and Purchaser agrees to same. Steps, porch, deck and railings may vary at any exterior entrance including garage entrance. Boxing is not shown. Illustrations are artist's concept. The Agreement of Purchase and Sale prevails in the event of conflict or ambiguity. LT-206 E. & O.E.

THE PILEA (CORNER)

2,901 sq.ft. – Elevation AE | 3,004 sq.ft. – Elevation BE



TRAILS OF WHITEVALE

WHERE MARKHAM MEETS PICKERING



ELEVATION A

Side Elevation (Corner)



ELEVATION B

Front Elevation (Corner)

ARTIST'S CONCEPT



ELEVATION B

Side Elevation (Corner)



ELEVATION B

Rear Elevation (Corner)

ARTIST'S CONCEPT

Sundial
HOMES

Floor plans, elevations, dimensions and details may be revised at Vendor's sole discretion. All dimensions are approximate and may vary, and generally comprise the greater length by the greater width of the area. Note that actual usable floor area may vary from that stated, which includes open areas and finished below grade areas where applicable. Homes may be sited in reverse and Purchaser agrees to same. Steps, porch, deck and railings may vary at any exterior entrance including garage entrance. Boxing is not shown. Illustrations are artist's concept. The Agreement of Purchase and Sale prevails in the event of conflict or ambiguity. LT-206 E. & O.E.

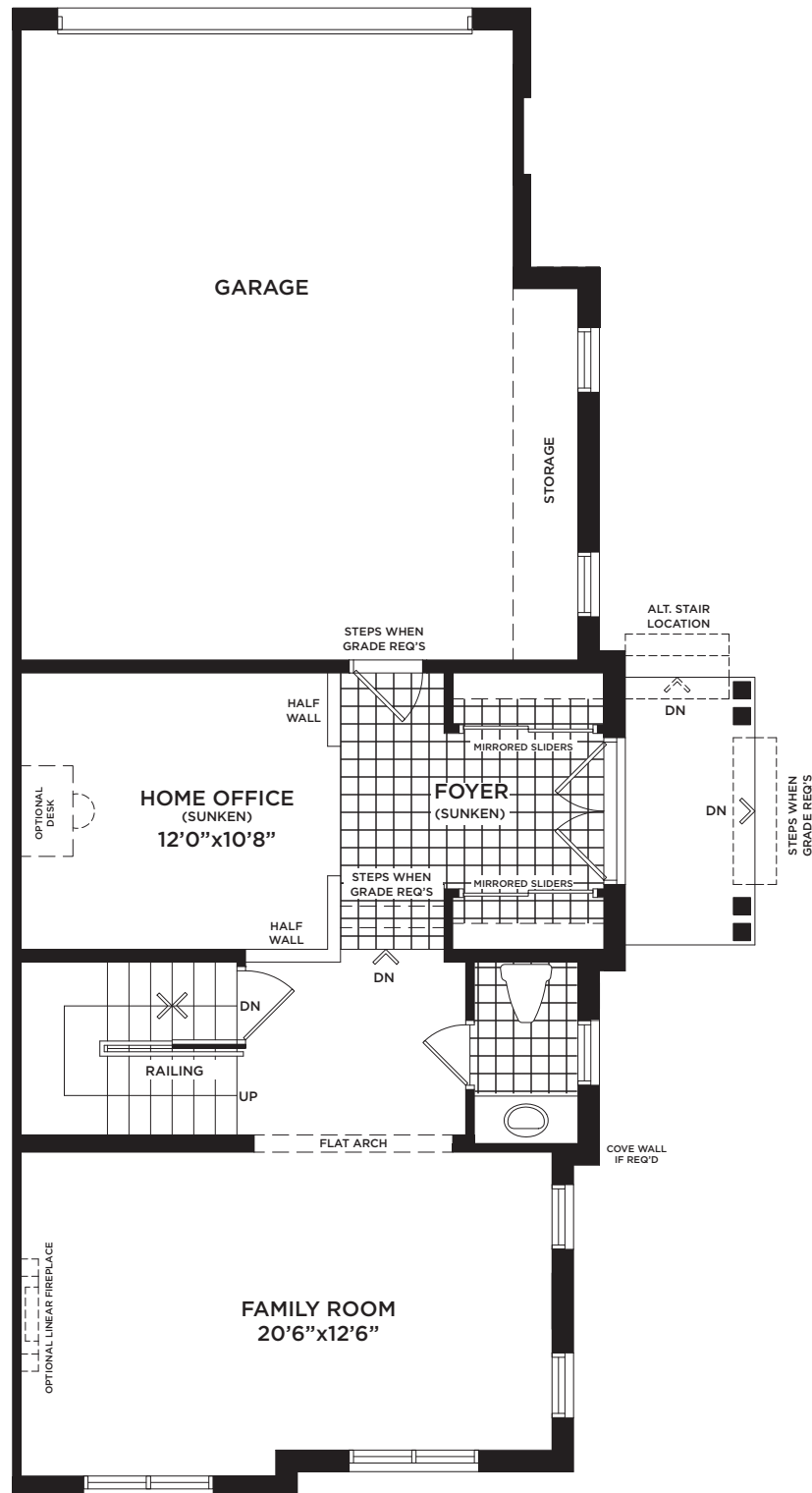
THE PILEA (CORNER)

2,901 sq.ft. – Elevation AE | 3,004 sq.ft. – Elevation BE



TRAILS OF WHITEVALE

WHERE MARKHAM MEETS PICKERING



GROUND FLOOR
ELEVATION 'A'



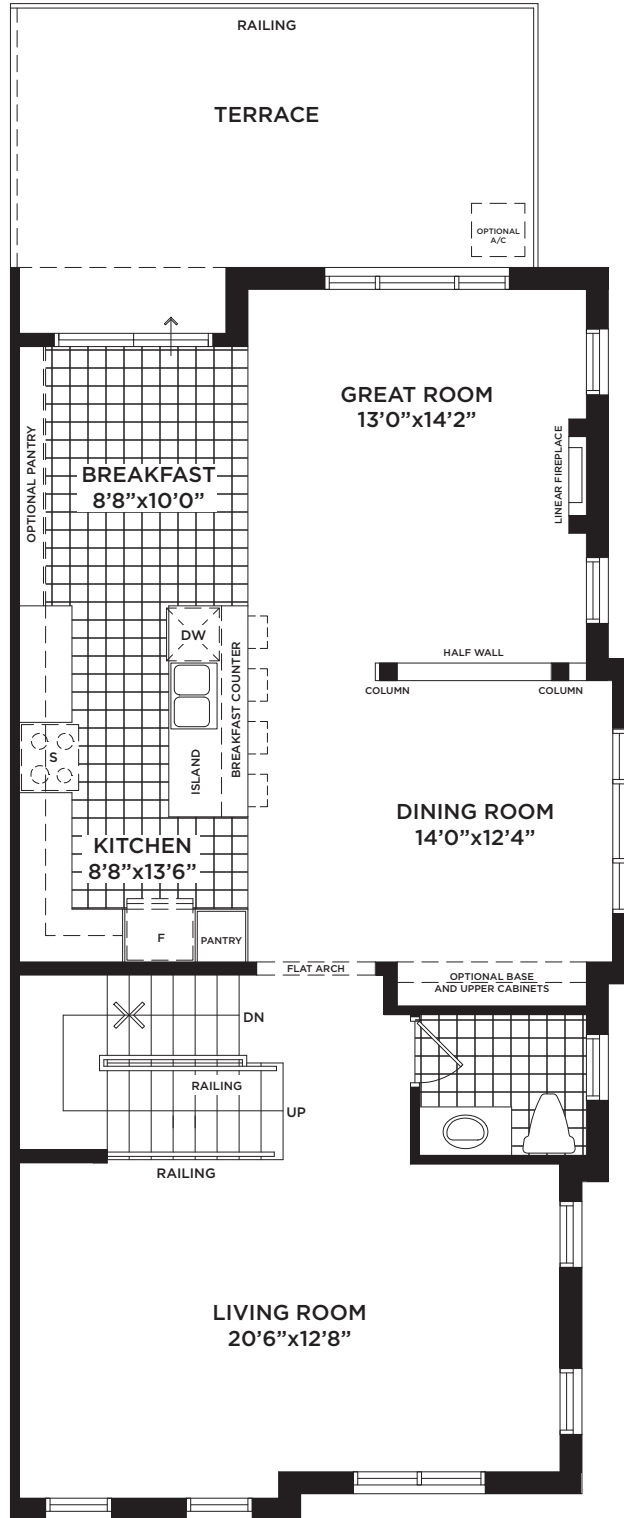
THE PILEA (CORNER)

2,901 sq.ft. – Elevation AE | 3,004 sq.ft. – Elevation BE



TRAILS OF WHITEVALE

WHERE MARKHAM MEETS PICKERING



MAIN FLOOR
ELEVATION 'A'



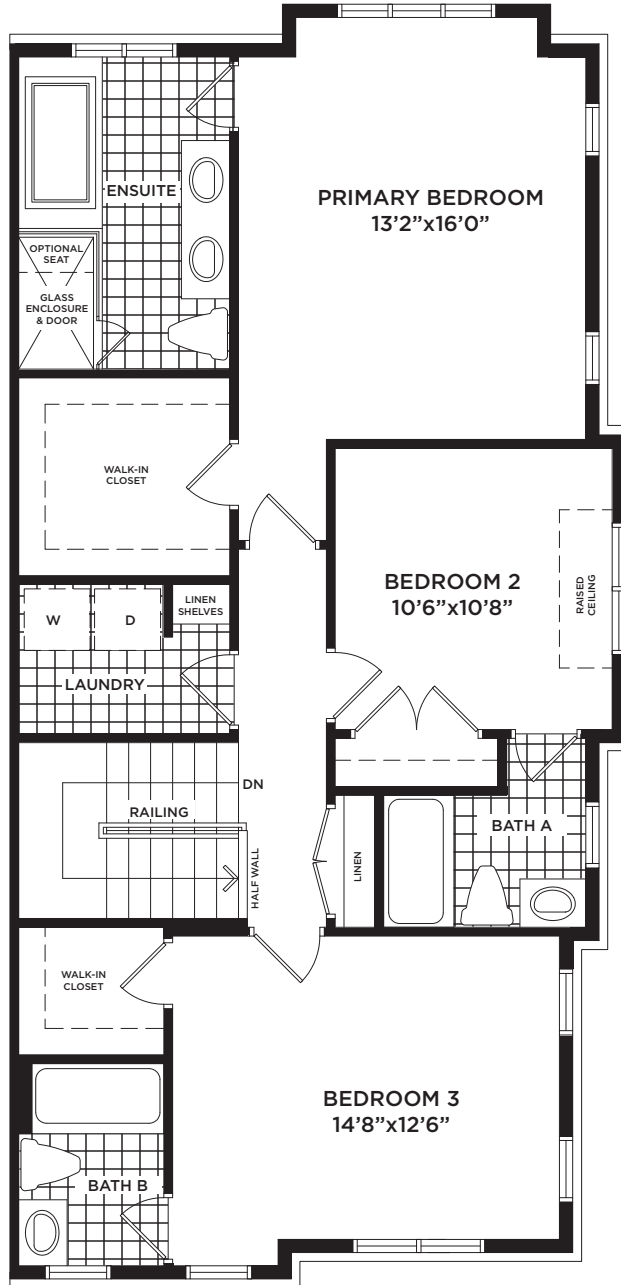
THE PILEA (CORNER)

2,901 sq.ft. – Elevation AE | 3,004 sq.ft. – Elevation BE



TRAILS OF WHITEVALE

WHERE MARKHAM MEETS PICKERING



UPPER FLOOR
ELEVATION 'A'

Sundial
HOMES

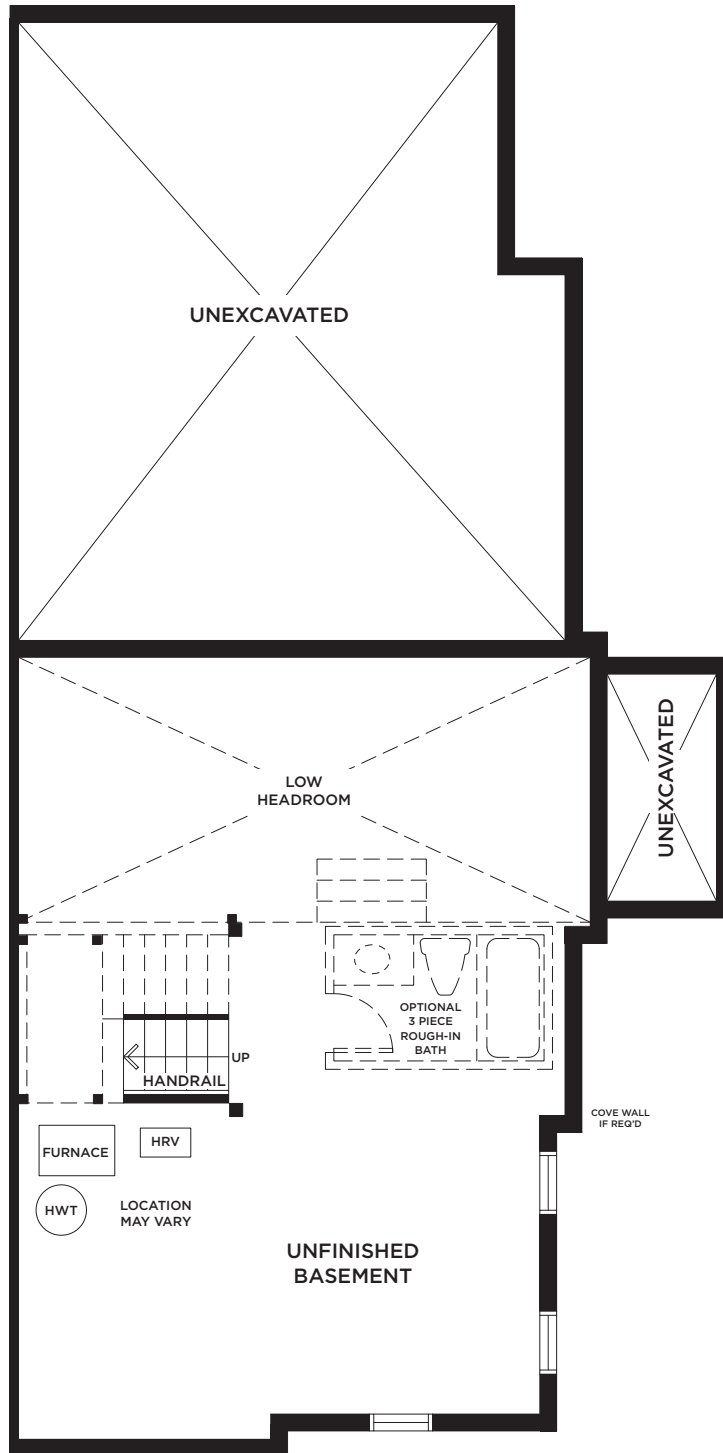
THE PILEA (CORNER)

2,901 sq.ft. – Elevation AE | 3,004 sq.ft. – Elevation BE



TRAILS OF WHITEVALE

WHERE MARKHAM MEETS PICKERING



BASEMENT
ELEVATION 'A'



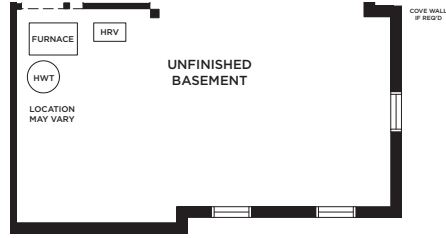
THE PILEA (CORNER)

2,901 sq.ft. – Elevation AE | 3,004 sq.ft. – Elevation BE

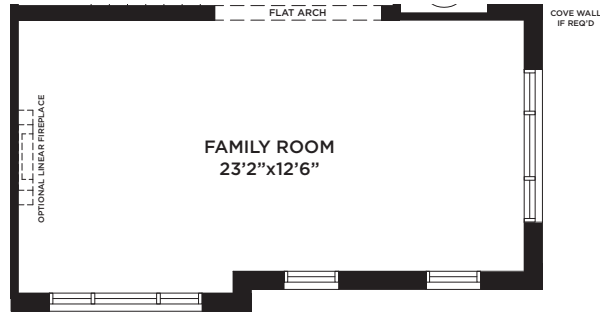


TRAILS OF WHITEVALE

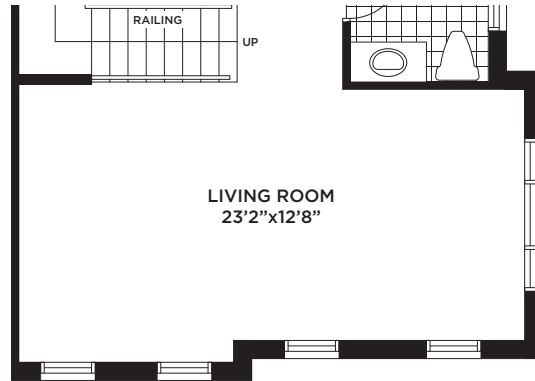
WHERE MARKHAM MEETS PICKERING



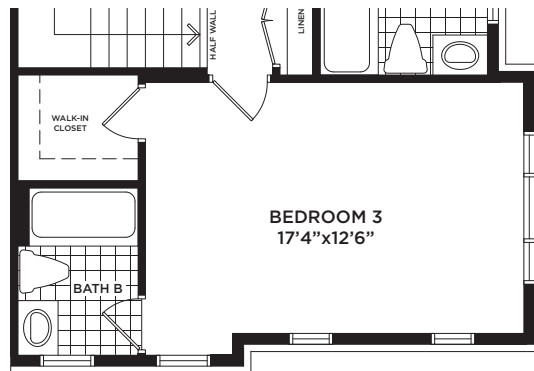
PARTIAL BASEMENT
ELEVATION 'B'



PARTIAL GROUND FLOOR
ELEVATION 'B'



PARTIAL MAIN FLOOR
ELEVATION 'B'



PARTIAL UPPER FLOOR
ELEVATION 'B'



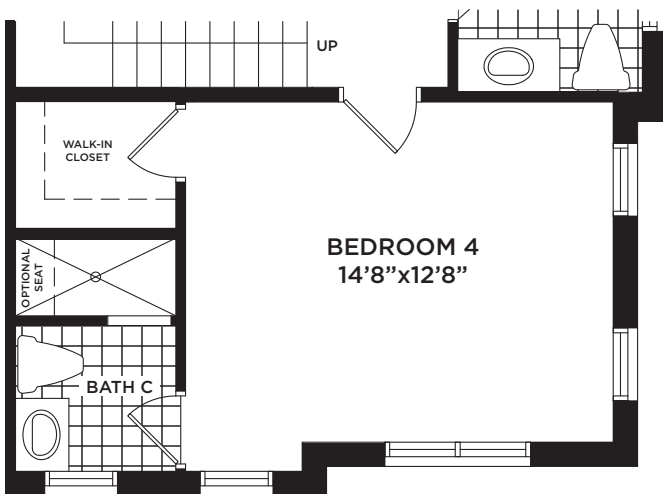
THE PILEA (CORNER)

2,901 sq.ft. – Elevation AE | 3,004 sq.ft. – Elevation BE

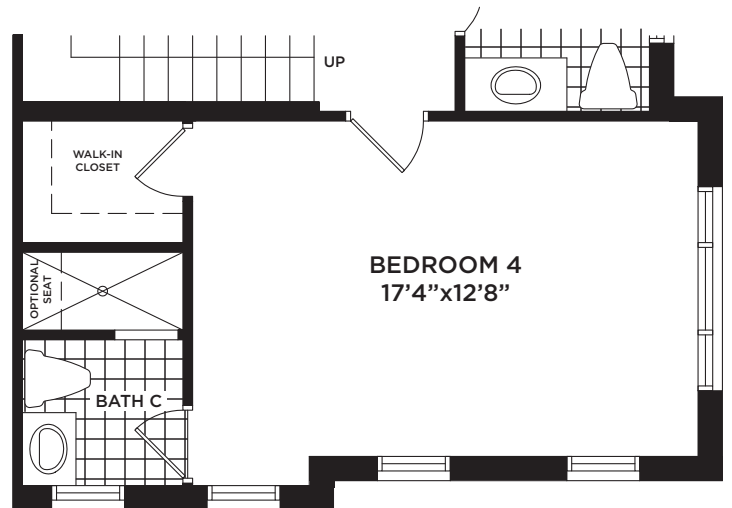


TRAILS OF WHITEVALE

WHERE MARKHAM MEETS PICKERING



PARTIAL MAIN FLOOR
OPTIONAL BEDROOM 4 LAYOUT
ELEVATION 'A'



PARTIAL MAIN FLOOR
OPTIONAL BEDROOM 4 LAYOUT
ELEVATION 'B'

Sundial
HOMES