

# THE SPRUCE (CORNER)

2,178 sq.ft. – Elevation A | 2,178 sq.ft. – Elevation B



## TRAILS OF WHITEVALE

WHERE MARKHAM MEETS PICKERING



*Side Elevation (Corner)*

ARTIST'S CONCEPT



*Front Elevation*

ARTIST'S CONCEPT

**Sundial  
HOMES**

Floor plans, elevations, dimensions and details may be revised at Vendor's sole discretion. All dimensions are approximate and may vary, and generally comprise the greater length by the greater width of the area. Note that actual usable floor area may vary from that stated, which includes open areas and finished below grade areas where applicable. Homes may be sited in reverse and Purchaser agrees to same. Steps, porch, deck and railings may vary at any exterior entrance including garage entrance. Boxing is not shown. Illustrations are artist's concept. The Agreement of Purchase and Sale prevails in the event of conflict or ambiguity. LT-176 E. & O.E.

# THE SPRUCE (CORNER)

2,178 sq.ft. – Elevation A | 2,178 sq.ft. – Elevation B



## TRAILS OF WHITEVALE

WHERE MARKHAM MEETS PICKERING



*Side Elevation (Corner)*

ARTIST'S CONCEPT



*Rear Elevation*

ARTIST'S CONCEPT

**Sundial  
HOMES**

Floor plans, elevations, dimensions and details may be revised at Vendor's sole discretion. All dimensions are approximate and may vary, and generally comprise the greater length by the greater width of the area. Note that actual usable floor area may vary from that stated, which includes open areas and finished below grade areas where applicable. Homes may be sited in reverse and Purchaser agrees to same. Steps, porch, deck and railings may vary at any exterior entrance including garage entrance. Boxing is not shown. Illustrations are artist's concept. The Agreement of Purchase and Sale prevails in the event of conflict or ambiguity. LT-176 E. & O.E.

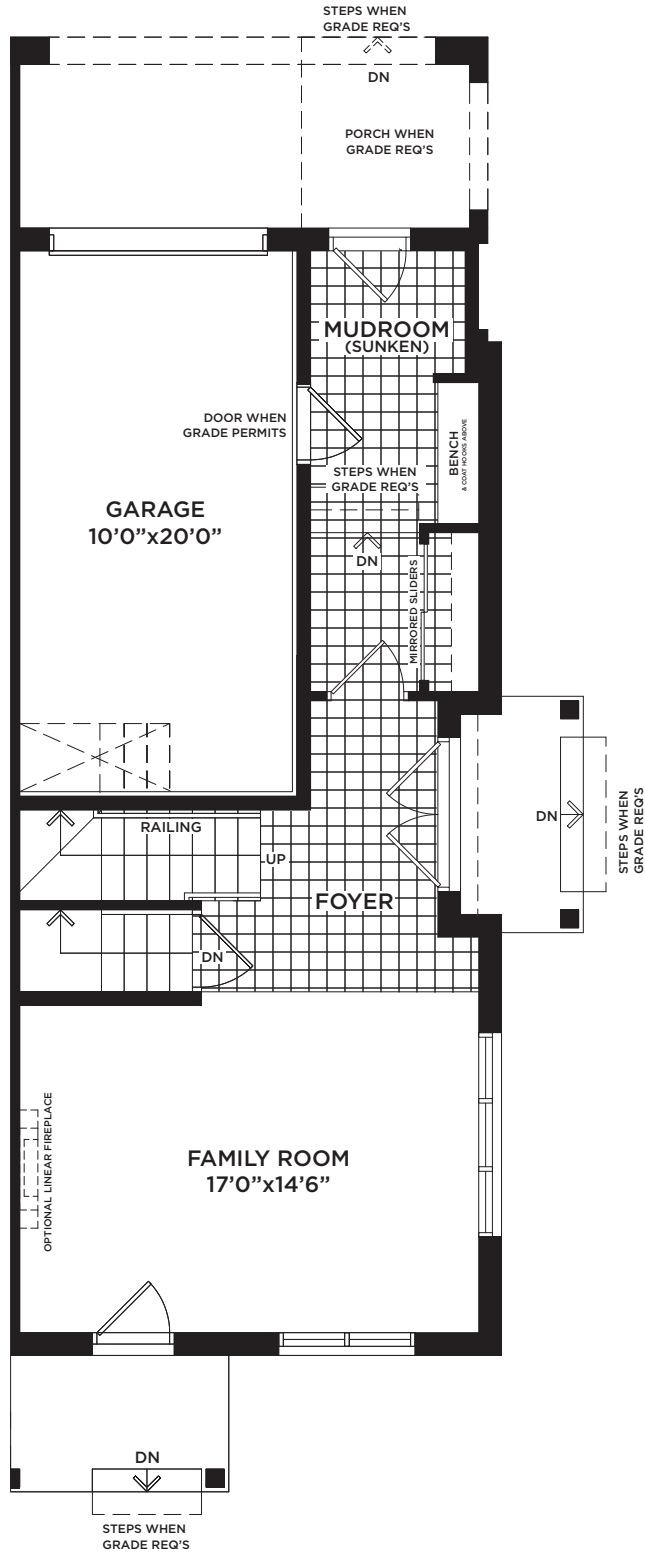
# THE SPRUCE (CORNER)

2,178 sq.ft. – Elevation A | 2,178 sq.ft. – Elevation B



## TRAILS OF WHITEVALE

WHERE MARKHAM MEETS PICKERING



GROUND FLOOR  
ELEVATION 'A'



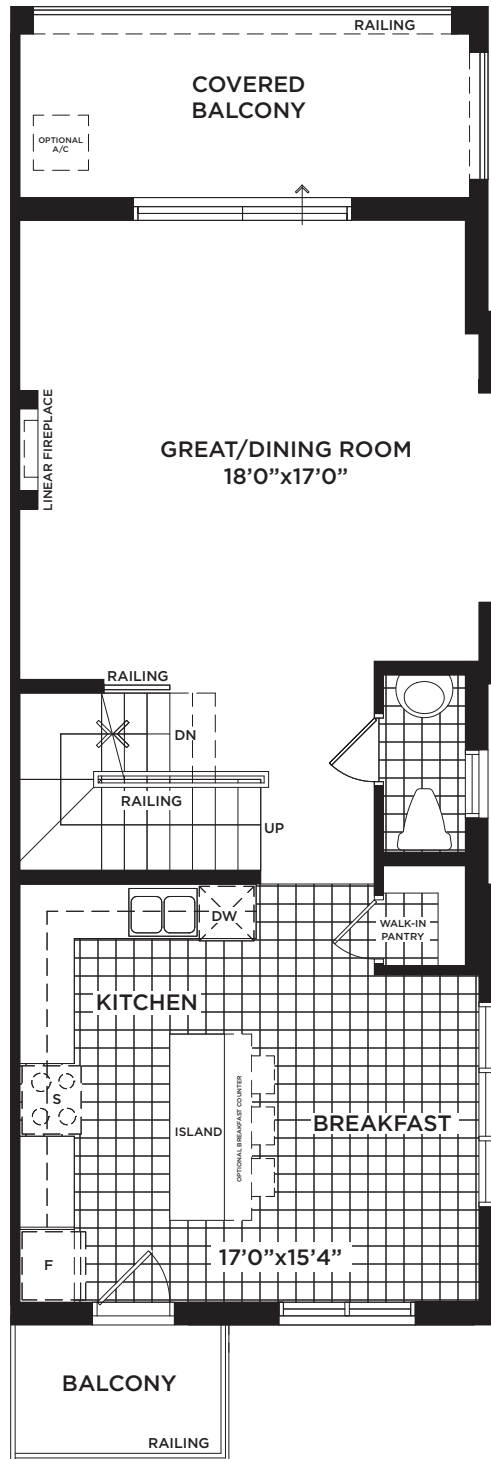
# THE SPRUCE (CORNER)

2,178 sq.ft. – Elevation A | 2,178 sq.ft. – Elevation B



## TRAILS OF WHITEVALE

WHERE MARKHAM MEETS PICKERING



**MAIN FLOOR  
ELEVATIONS 'A' & 'B'**



Floor plans, elevations, dimensions and details may be revised at Vendor's sole discretion. All dimensions are approximate and may vary, and generally comprise the greater length by the greater width of the area. Note that actual usable floor area may vary from that stated, which includes open areas and finished below grade areas where applicable. Homes may be sited in reverse and Purchaser agrees to same. Steps, porch, deck and railings may vary at any exterior entrance including garage entrance. Boxing is not shown. Illustrations are artist's concept. The Agreement of Purchase and Sale prevails in the event of conflict or ambiguity. LT-176 E. & O.E.

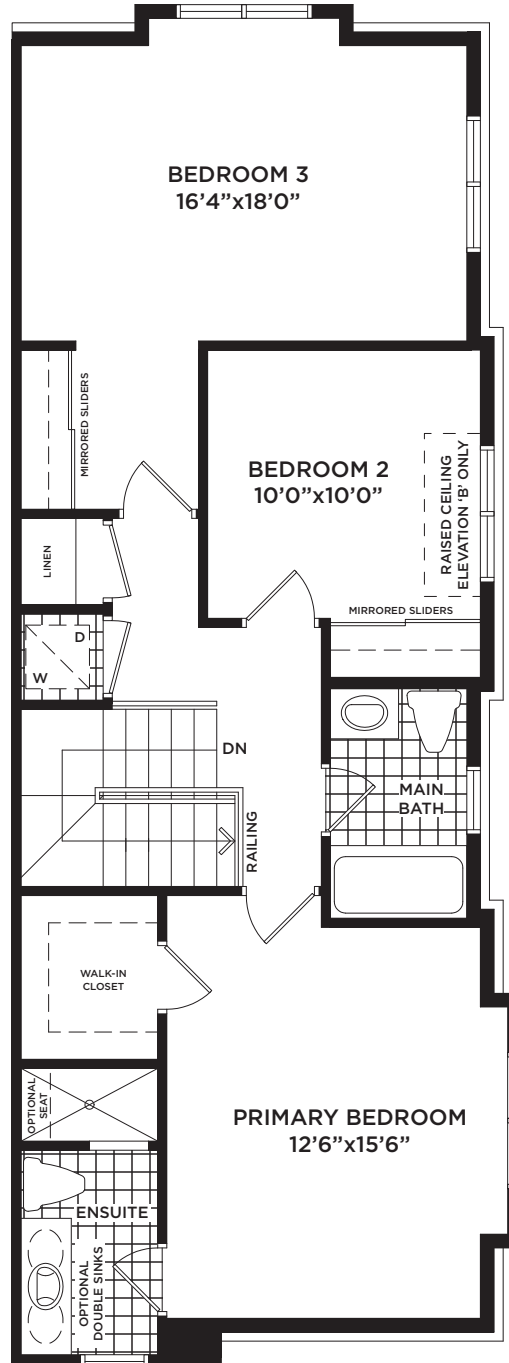
# THE SPRUCE (CORNER)

2,178 sq.ft. – Elevation A | 2,178 sq.ft. – Elevation B



## TRAILS OF WHITEVALE

WHERE MARKHAM MEETS PICKERING



UPPER FLOOR  
ELEVATIONS 'A' & 'B'



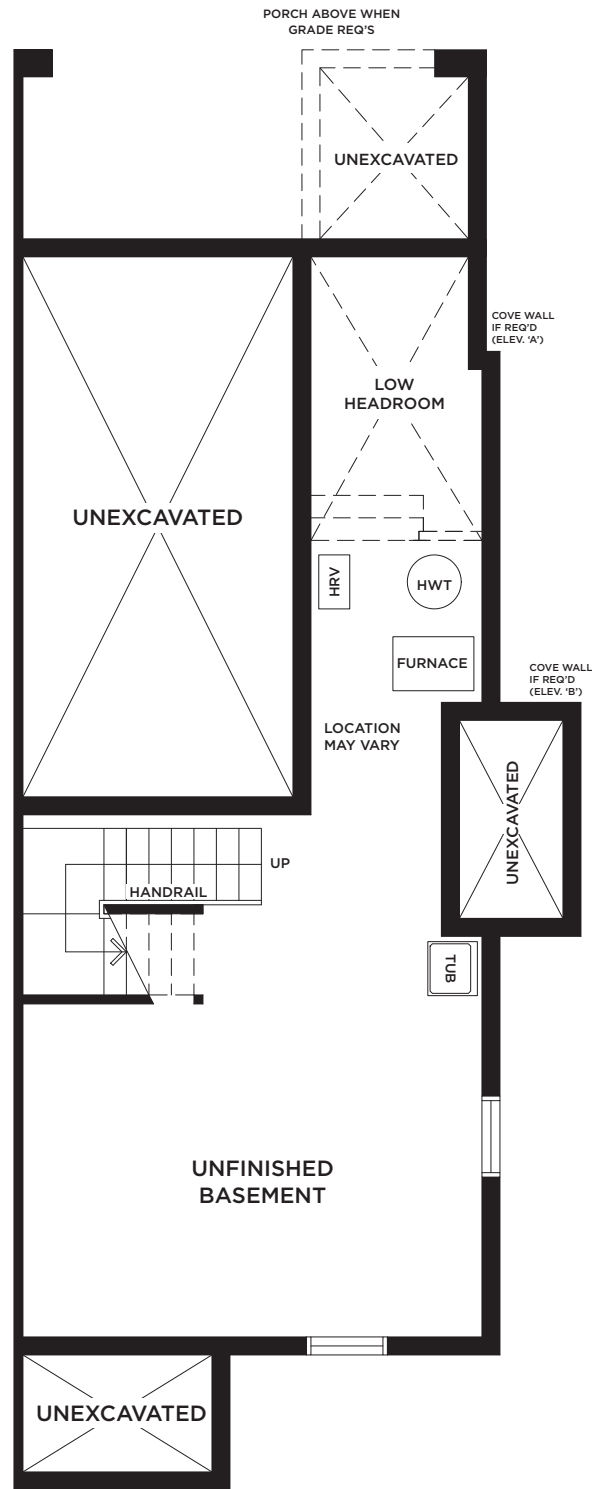
# THE SPRUCE (CORNER)

2,178 sq.ft. – Elevation A | 2,178 sq.ft. – Elevation B



## TRAILS OF WHITEVALE

WHERE MARKHAM MEETS PICKERING



**BASEMENT  
ELEVATIONS 'A' & 'B'**



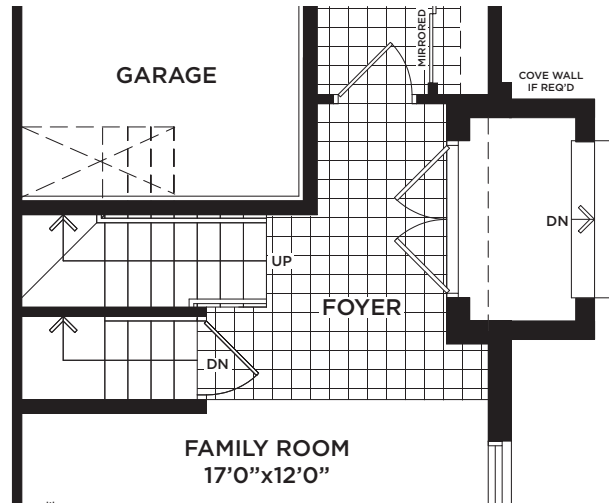
# THE SPRUCE (CORNER)

2,178 sq.ft. – Elevation A | 2,178 sq.ft. – Elevation B



## TRAILS OF WHITEVALE

WHERE MARKHAM MEETS PICKERING



PARTIAL GROUND FLOOR  
ELEVATION 'B'

**Sundial**  
**HOMES**

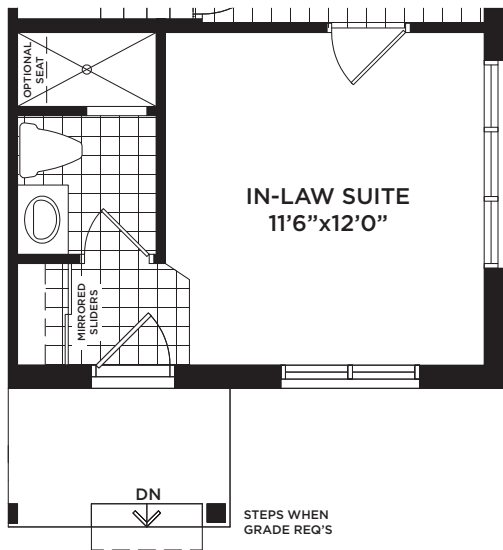
# THE SPRUCE (CORNER)

2,178 sq.ft. – Elevation A | 2,178 sq.ft. – Elevation B

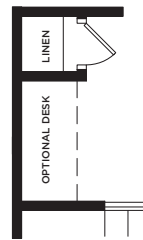


TRAILS OF  
**WHITEVALE**

WHERE MARKHAM MEETS PICKERING

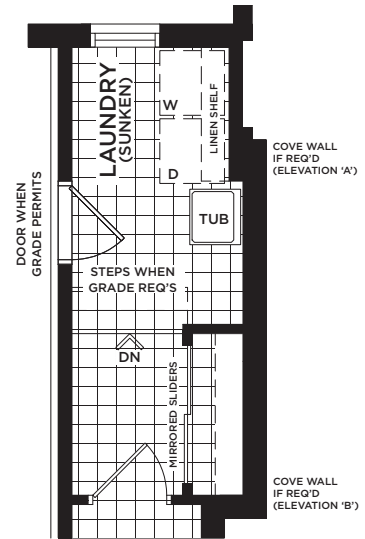


**PARTIAL GROUND FLOOR  
OPTIONAL IN-LAW SUITE  
ELEVATIONS 'A' & 'B'**



**PARTIAL  
UPPER FLOOR  
OPTIONAL DESK AREA  
ELEVATIONS 'A' & 'B'**

OPTIONAL DESK AREA  
CAN ONLY BE ACCOMMODATED  
IF OPTIONAL GROUND FLOOR  
LAUNDRY IS SELECTED



**PARTIAL GROUND FLOOR  
OPTIONAL LAUNDRY ROOM  
ELEVATIONS 'A' & 'B'**

