

# THE BIRCH

1,450 sq.ft. – Elevation A | 1,458 sq.ft. – Elevation B



## TRAILS OF WHITEVALE

WHERE MARKHAM MEETS PICKERING



*Front Elevation*

ARTIST'S CONCEPT



*Rear Elevation*

ARTIST'S CONCEPT

**Sundial**  
**HOMES**

Floor plans, elevations, dimensions and details may be revised at Vendor's sole discretion. All dimensions are approximate and may vary, and generally comprise the greater length by the greater width of the area. Note that actual usable floor area may vary from that stated, which includes open areas and finished below grade areas where applicable. Homes may be sited in reverse and Purchaser agrees to same. Steps, porch, deck and railings may vary at any exterior entrance including garage entrance. Boxing is not shown. Illustrations are artist's concept. The Agreement of Purchase and Sale prevails in the event of conflict or ambiguity. LT-171 E. & O.E.

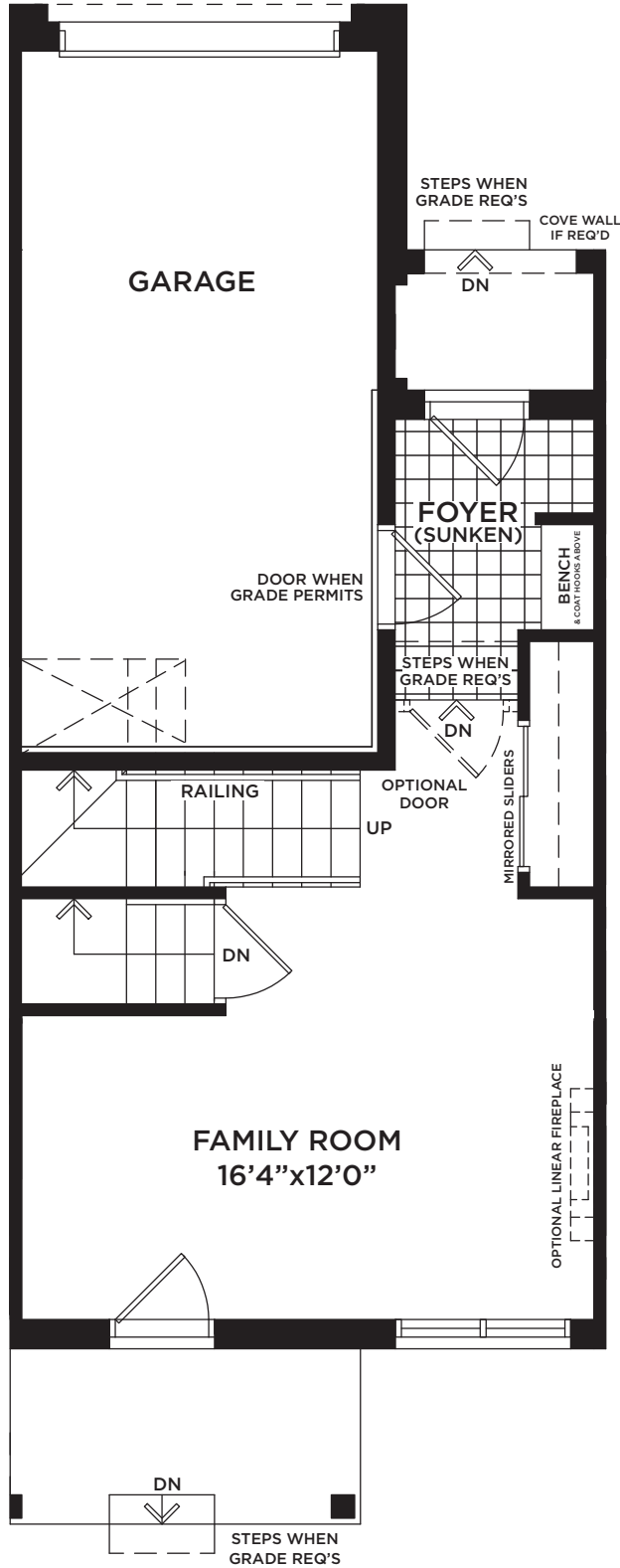
# THE BIRCH

1,450 sq.ft. – Elevation A | 1,458 sq.ft. – Elevation B



## TRAILS OF WHITEVALE

WHERE MARKHAM MEETS PICKERING



**GROUND FLOOR  
ELEVATION 'A'**

**Sundial  
HOMES**

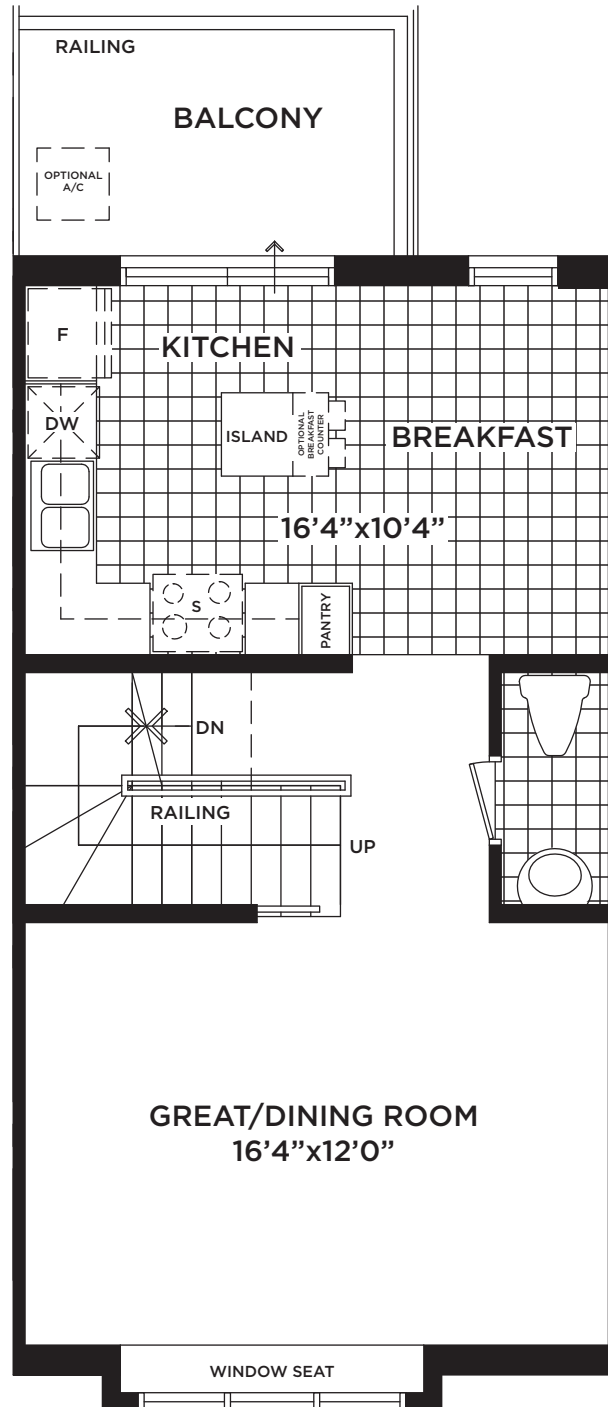
# THE BIRCH

1,450 sq.ft. – Elevation A | 1,458 sq.ft. – Elevation B



## TRAILS OF WHITEVALE

WHERE MARKHAM MEETS PICKERING



**MAIN FLOOR  
ELEVATION 'A'**

**Sundial  
HOMES**

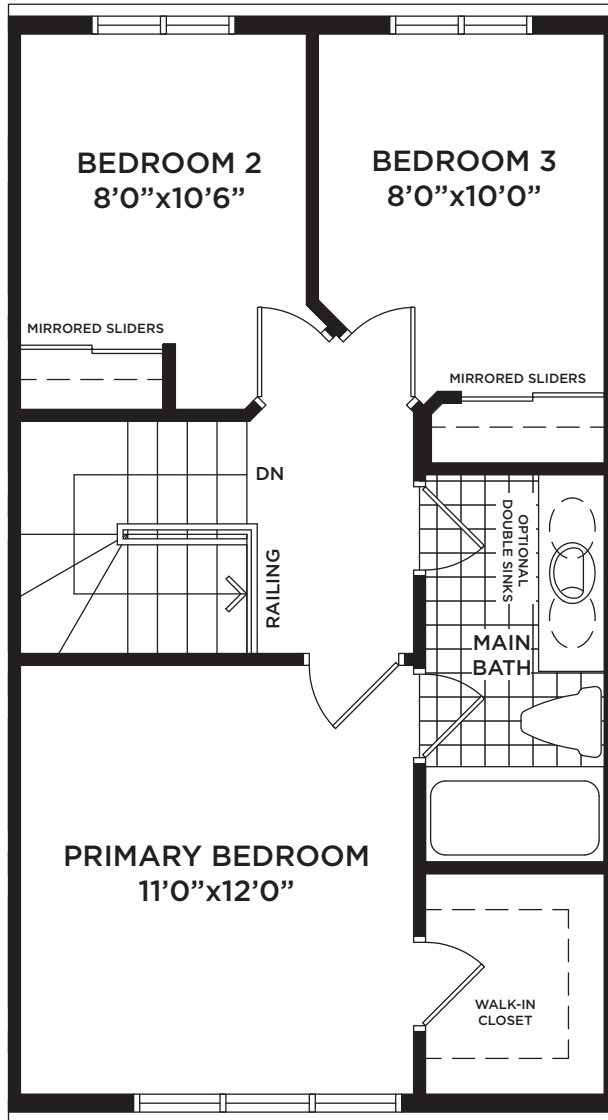
# THE BIRCH

1,450 sq.ft. – Elevation A | 1,458 sq.ft. – Elevation B



## TRAILS OF WHITEVALE

WHERE MARKHAM MEETS PICKERING



**UPPER FLOOR  
ELEVATION 'A'**



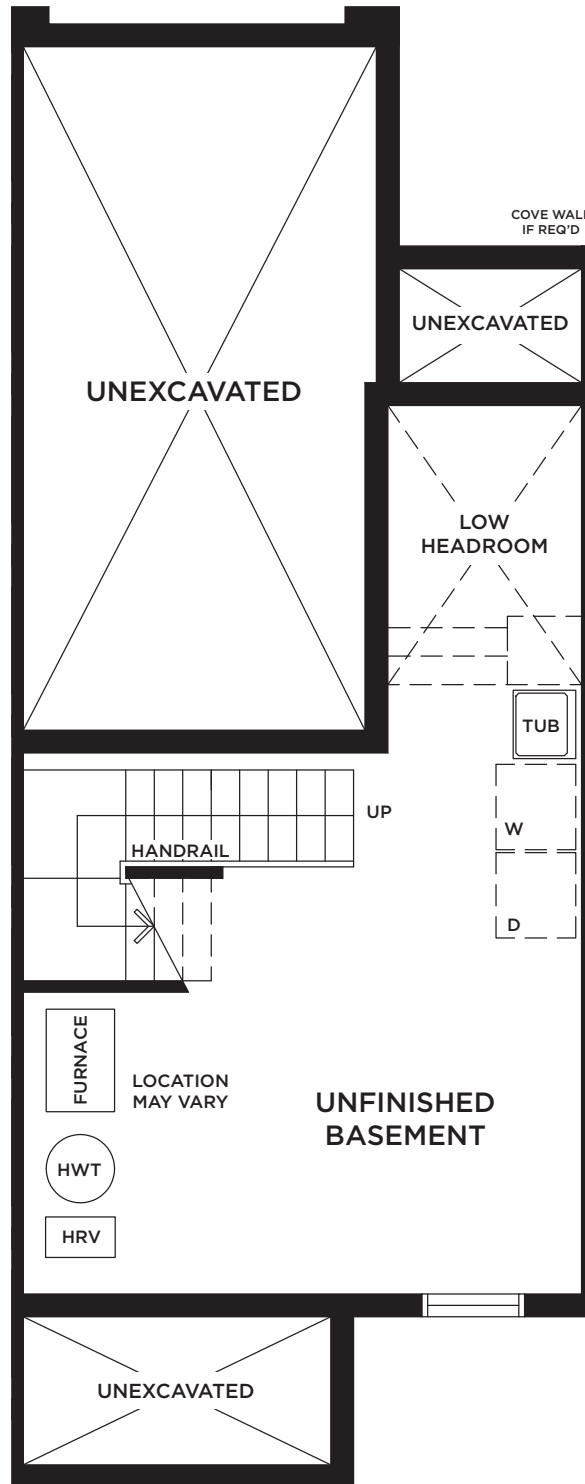
# THE BIRCH

1,450 sq.ft. – Elevation A | 1,458 sq.ft. – Elevation B



## TRAILS OF WHITEVALE

WHERE MARKHAM MEETS PICKERING



**BASEMENT  
ELEVATIONS 'A' & 'B'**



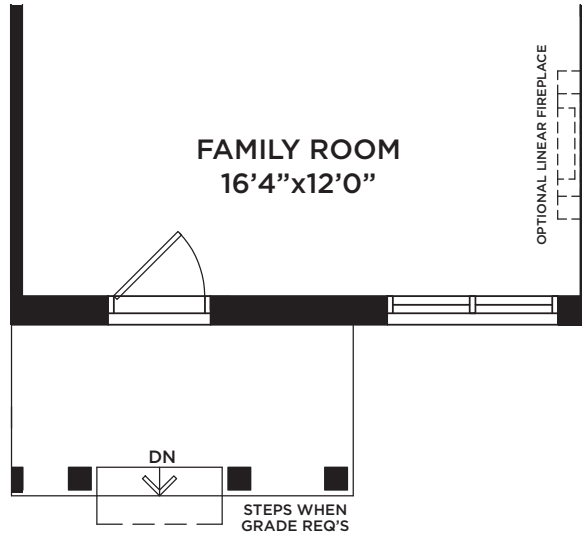
# THE BIRCH

1,450 sq.ft. – Elevation A | 1,458 sq.ft. – Elevation B



## TRAILS OF WHITEVALE

WHERE MARKHAM MEETS PICKERING



**PARTIAL GROUND FLOOR  
ELEVATION 'B'**



**PARTIAL MAIN FLOOR  
ELEVATION 'B'**



**PARTIAL UPPER FLOOR  
ELEVATION 'B'**

**Sundial  
HOMES**

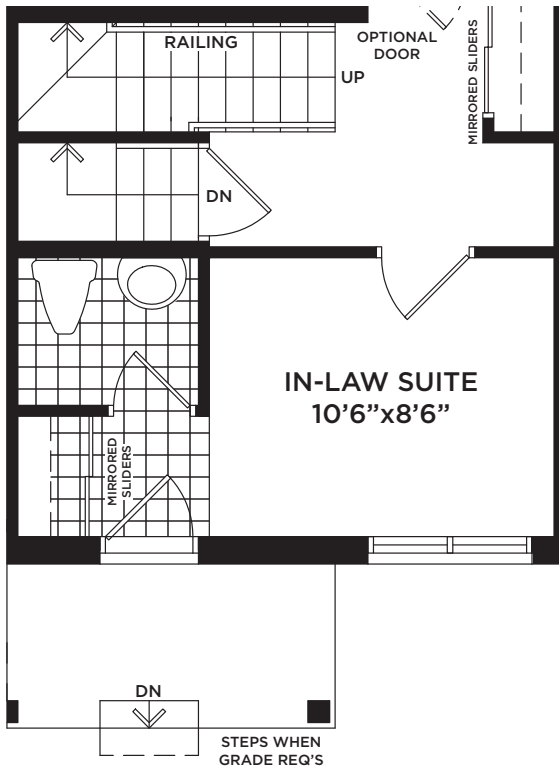
# THE BIRCH

1,450 sq.ft. – Elevation A | 1,458 sq.ft. – Elevation B

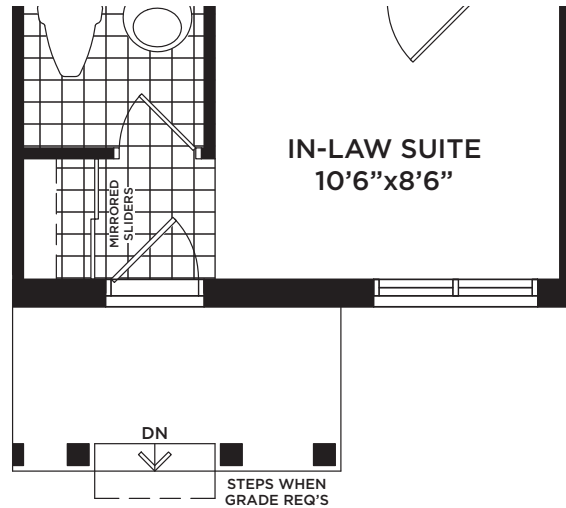


## TRAILS OF WHITEVALE

WHERE MARKHAM MEETS PICKERING



**PARTIAL GROUND FLOOR  
OPTIONAL IN-LAW SUITE  
ELEVATION 'A'**



**PARTIAL GROUND FLOOR  
OPTIONAL IN-LAW SUITE  
ELEVATION 'B'**

**Sundial  
HOMES**