

# THE ORIOLE

1,934 sq.ft. – Elevation A & B | 1,992 sq.ft. – Elevation A & B End Unit  
Townhomes



ELEVATION A



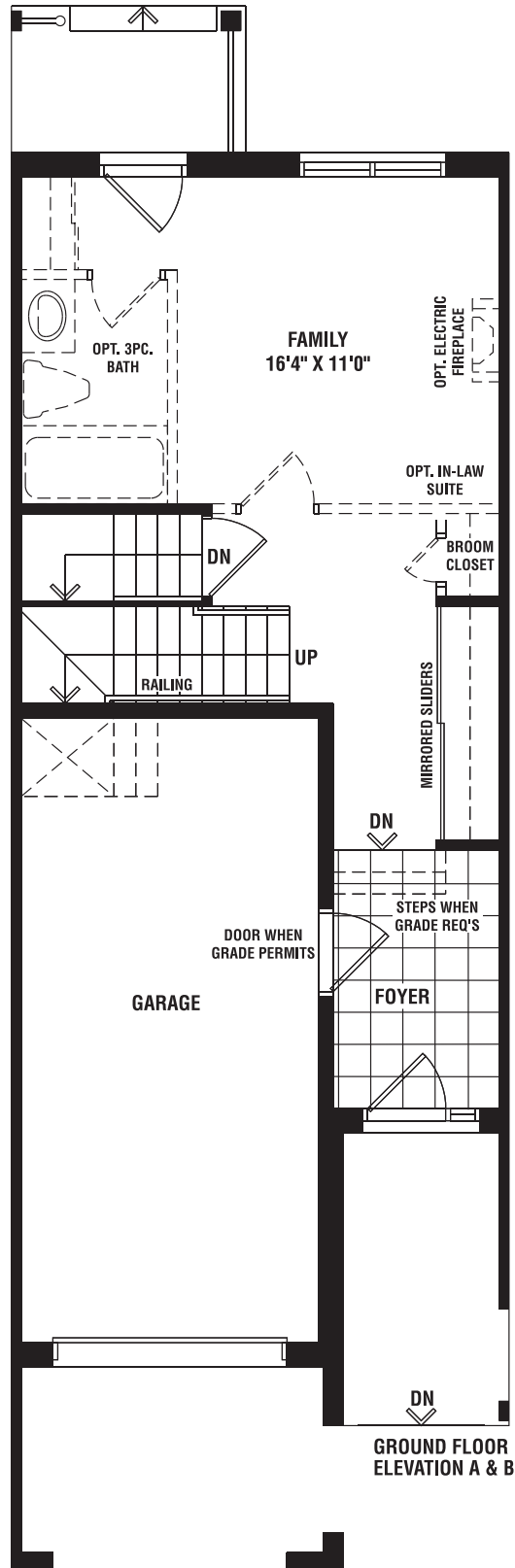
ELEVATION B



Floor plans, elevations, dimensions and details may be revised at Vendor's sole discretion. All dimensions are approximate and may vary, and generally comprise the greater length by the greater width of the area. Note that actual usable floor area may vary from that stated, which includes open areas and finished below grade areas where applicable. Homes may be sited in reverse and Purchaser agrees to same. Steps, porch, deck and railings may vary at any exterior entrance including garage entrance. Boxing is not shown. Illustrations are artist's concept. The Agreement of Purchase and Sale prevails in the event of conflict or ambiguity. (RLT-526) E. & O.E. October 25, 2016.

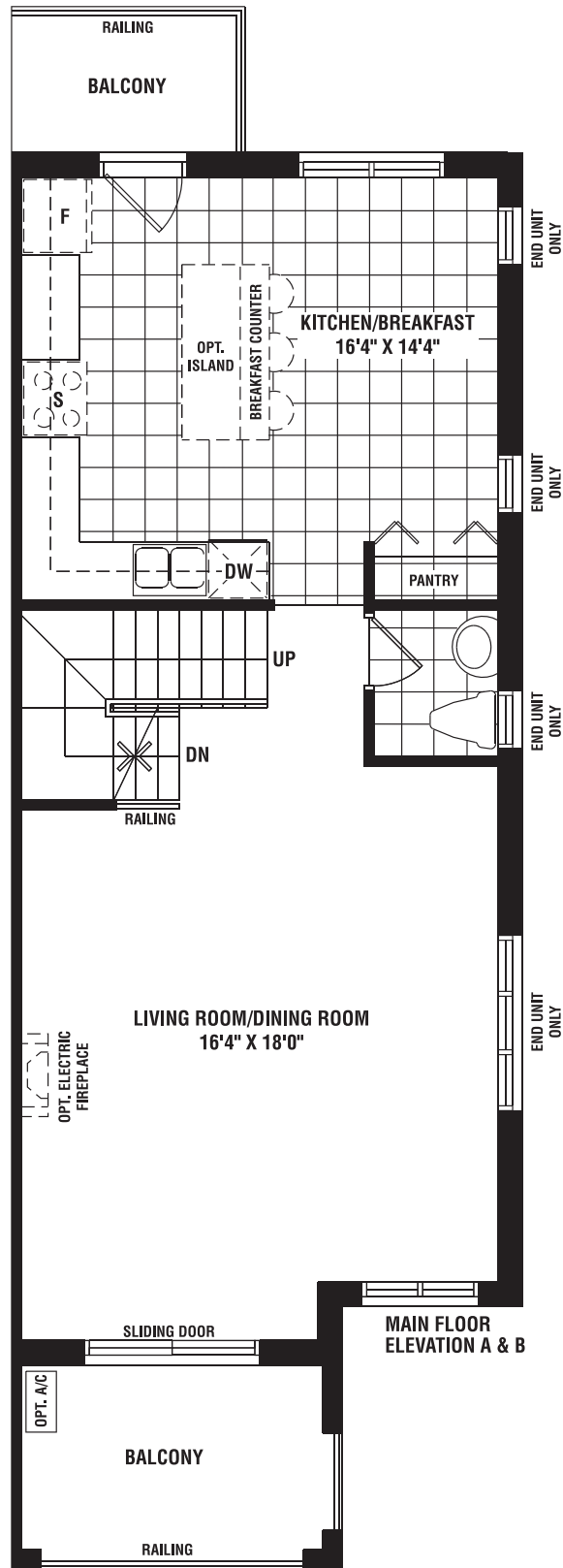
# THE ORIOLE

1,934 sq.ft. – Elevation A & B | 1,992 sq.ft. – Elevation A & B End Unit  
Townhomes



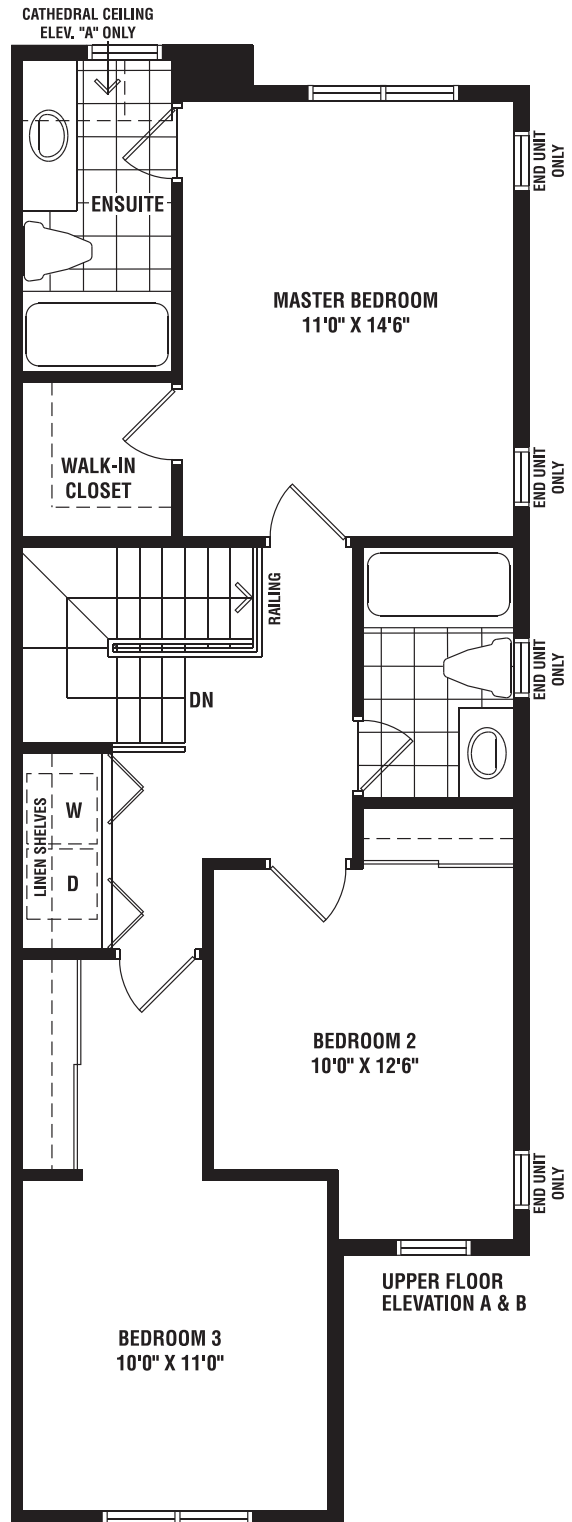
# THE ORIOLE

1,934 sq.ft. – Elevation A & B | 1,992 sq.ft. – Elevation A & B End Unit  
Townhomes



# THE ORIOLE

1,934 sq.ft. – Elevation A & B | 1,992 sq.ft. – Elevation A & B End Unit  
Townhomes



Floor plans, elevations, dimensions and details may be revised at Vendor's sole discretion. All dimensions are approximate and may vary, and generally comprise the greater length by the greater width of the area. Note that actual usable floor area may vary from that stated, which includes open areas and finished below grade areas where applicable. Homes may be sited in reverse and Purchaser agrees to same. Steps, porch, deck and railings may vary at any exterior entrance including garage entrance. Boxing is not shown. Illustrations are artist's concept. The Agreement of Purchase and Sale prevails in the event of conflict or ambiguity. (RLT-526) E. & O.E. October 25, 2016.

# THE ORIOLE

1,934 sq.ft. – Elevation A & B | 1,992 sq.ft. – Elevation A & B End Unit  
Townhomes

